



CASTLE HILL

4 3 2

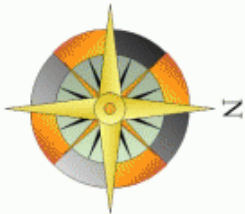
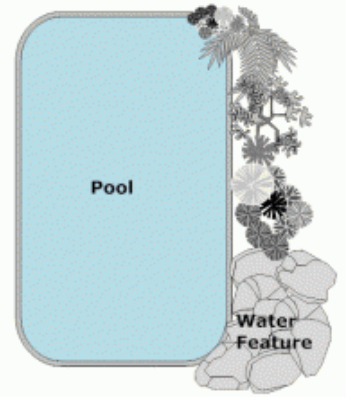
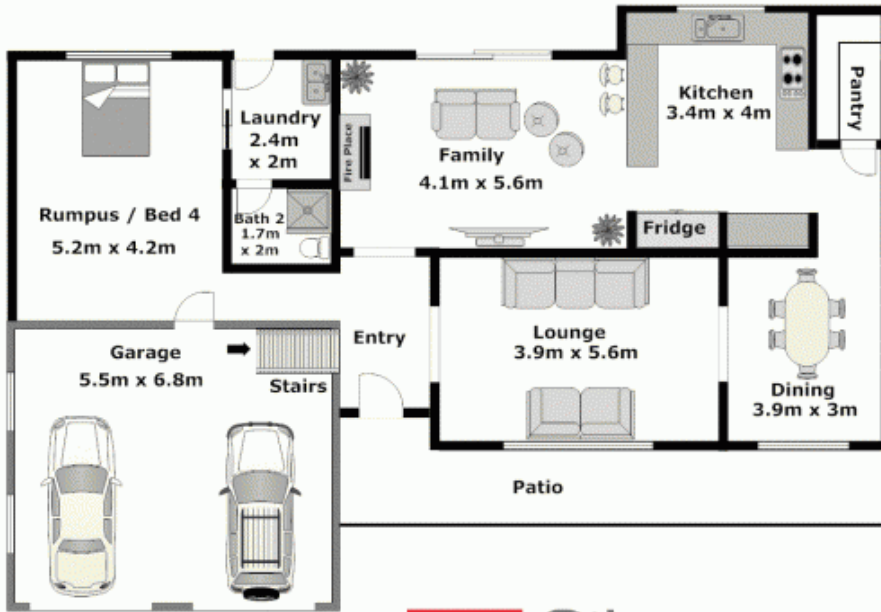
Situated on a whisper quiet cul-de-sac in the desirable Knightsbridge estate is this great split level family home on a 826sqm block. Backing onto permanent bush reserve and featuring four bedrooms plus study, two bedrooms with built-in wardrobes and the master boasts a walk-in robe & ensuite. Spacious living areas with formal lounge & dining, rumpus/gym or potential in-law accommodation and meals/TV area with balcony adjacent to the functional kitchen with plenty of storage & large pantry. Awesome backyard and outlook with paved entertaining area that looks onto the grassed area and pool, perfect to enjoy those summer barbeques. Other great features include ducted air-conditioning system and double lock-up garage with internal access. Conveniently located within walking distance to Samuel Gilbert Public School, Knightsbridge Shopping Centre and public transport including M2 Bus.
SOLD 11th March, 2011

Price : \$ 790,000
Land Size : 826 sqm
View : <https://www.gilmour.com.au/sale/nsw/hills/castle-hill/residential/house/5619979>



Gilmour Property Agents
02 9899 3311

Lower Level



APPROXIMATE UPPER LEVEL FLOOR AREA: 67m² (7sq)
 APPROXIMATE LOWER LEVEL FLOOR AREA: 159m² (17sq)
 APPROXIMATE GARAGE FLOOR AREA: 38m² (4sq)

APPROXIMATE INTERNAL FLOOR AREA: 264m² (28sq)

DISCLAIMER:

Whilst every attempt has been made to ensure the accuracy of the floor plan contained here, no responsibility is taken for any error, omission, or misstatement. This floor plan is intended as a guide only, for representation purposes only, and should be used as such by any prospective purchaser. No guarantee or warranties can be given, and any person using this information should rely on their own enquires.

Upper Level

