






CASTLE HILL

4  3  3 

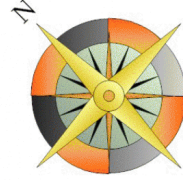
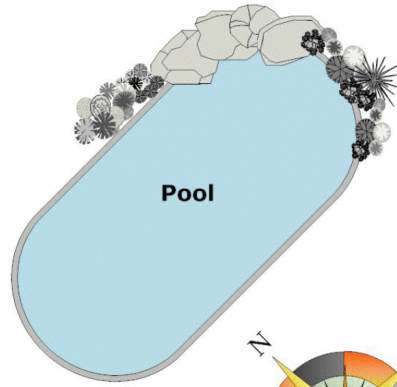
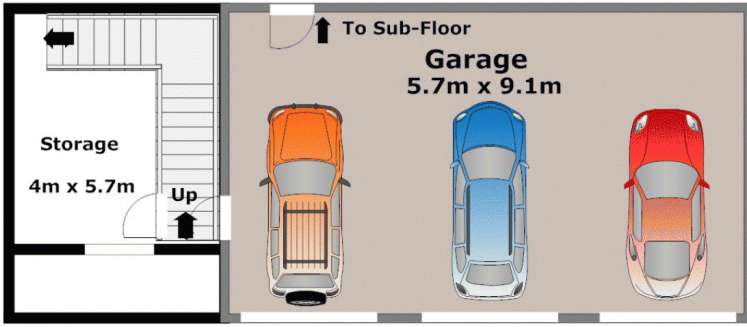
Sitting high proud & handsome at the top of a quiet cul-de-sac in the popular "Balintore Estate" with a breath taking outlook over Castle Hill. This substantial Masterbuilt residence was crafted by Arthur Billyard on a huge 1000sqm block. Boasting four double bedrooms plus a study and with walk-in robe & ensuite to the master bedroom. Oversized living areas include formal lounge, separate dining and great family relaxing area close to the eat-in timber gas kitchen. A rumpus room to enjoy or shoot some pool in and the sitting room upstairs & downstairs gives room for a gym, arts & crafts or a hobby. Cool off in the warmer months in the lovely in-ground pool and a private yard for children to run around. Triple automatic garage with heaps of storage space behind, ducted air-conditioning & vacuum, alarm and intercom-an easy to live in floorplan and a great combination of features here. Location, Location, Location!

Land Size : 1000 sqm
View : <https://www.gilmour.com.au/sale/nsw/hills/castle-hill/residential/house/5620000>

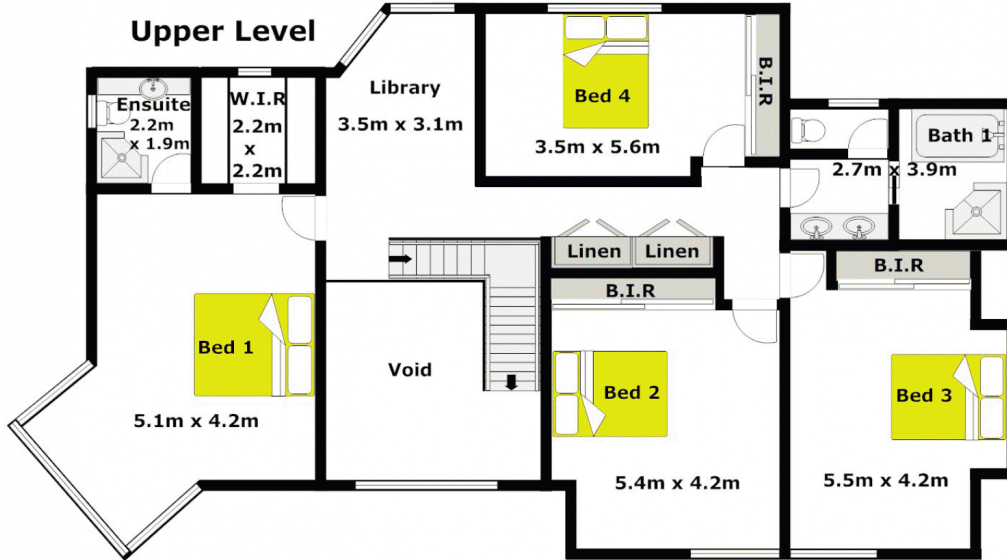


Craig Alexis
02 9899 3311

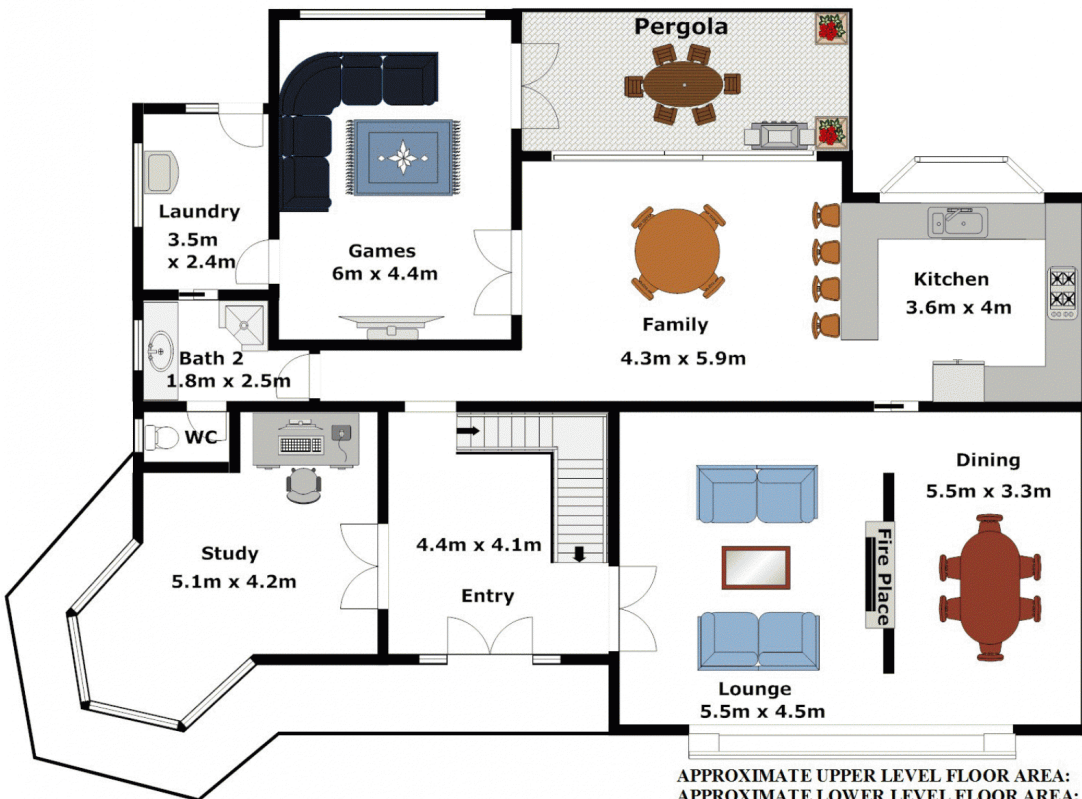
Lower Level



Upper Level



Ground Level



APPROXIMATE UPPER LEVEL FLOOR AREA: 162m² (17sq)
 APPROXIMATE LOWER LEVEL FLOOR AREA: 74m² (8sq)
 APPROXIMATE GROUND LEVEL FLOOR AREA: 196m² (21sq)

APPROXIMATE INTERNAL FLOOR AREA: 432m² (46sq)

DISCLAIMER:

Whilst every attempt has been made to ensure the accuracy of the floor plan contained here, no responsibility is taken for any error, omission, or misstatement. This floor plan is intended as a guide only, for representation purposes only, and should be used as such by any prospective purchaser. No guarantee or warranties can be given, and any person using this information should rely on their own enquiries.