






BAULKHAM HILLS

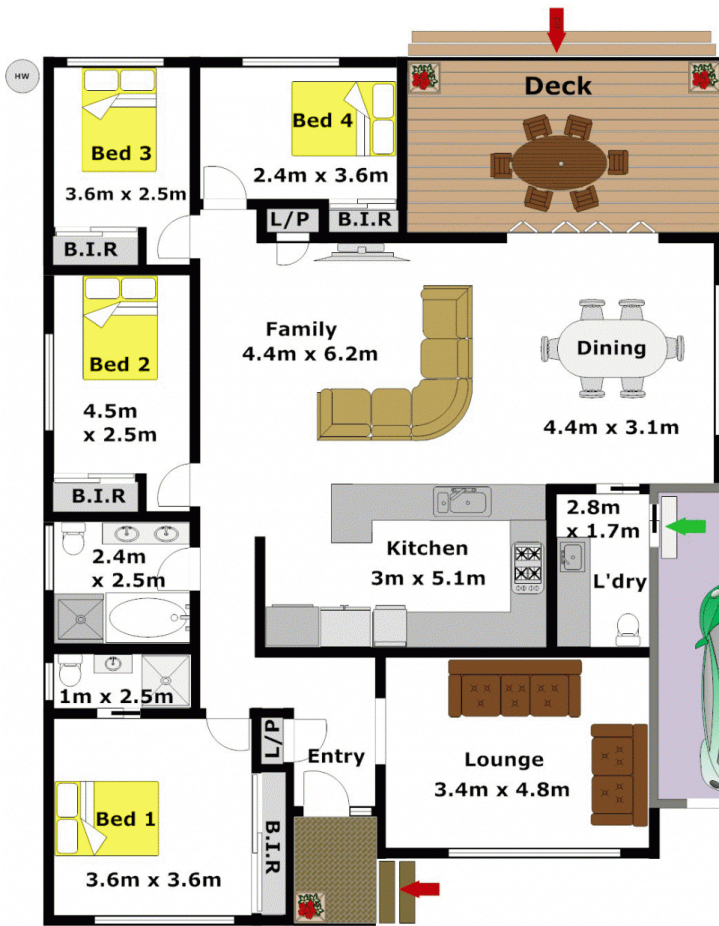
Fully renovated Tasmanian Timber kitchen with quality bench tops and gas stainless steel appliances. The home has been freshly painted throughout in a neutral colour which compliments the solid timber flooring and plantation shutters. Featuring complete c-bus lighting system and integrated alarm system. Bi-fold doors lead out to the covered entertaining area adjoining the large private grassed backyard with a perfect northerly aspect. With plenty of storage and good sized bedrooms, inspection is a must as this one will fly out the door. There is nothing more to do but move in and enjoy this beautifully renovated home in a nice quiet street.
SOLD 22nd July, 2011

4  2  2 

Land Size : 697 sqm
View : <https://www.gilmour.com.au/sale/nsw/hills/baulkham-hills/residential/house/5620035>



Gilmour Property Agents
02 9899 3311



APPROXIMATE FLOOR AREA:

138m² (15sq)

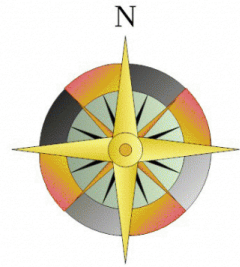
APPROXIMATE GARAGE FLOOR AREA:

30m² (3sq)

APPROXIMATE INTERNAL FLOOR AREA: 168m² (18sq)

DISCLAIMER:

Whilst every attempt has been made to ensure the accuracy of the floor plan contained here, no responsibility is taken for any error, omission, or misstatement. This floor plan is intended as a guide only, for representation purposes only, and should be used as such by any prospective purchaser. No guarantee or warranties can be given, and any person using this information should rely on their own enquires.



Gilmour
PROPERTY AGENTS