



CASTLE HILL

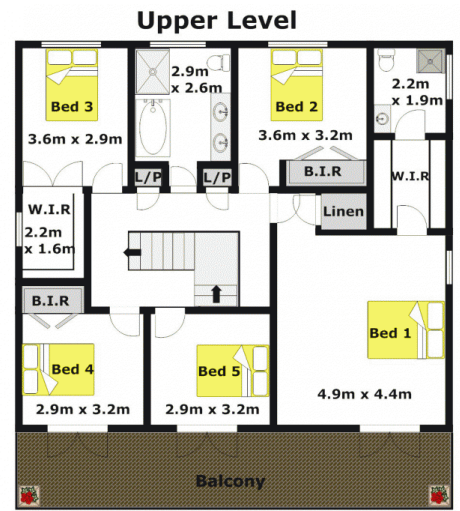
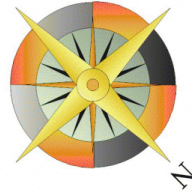
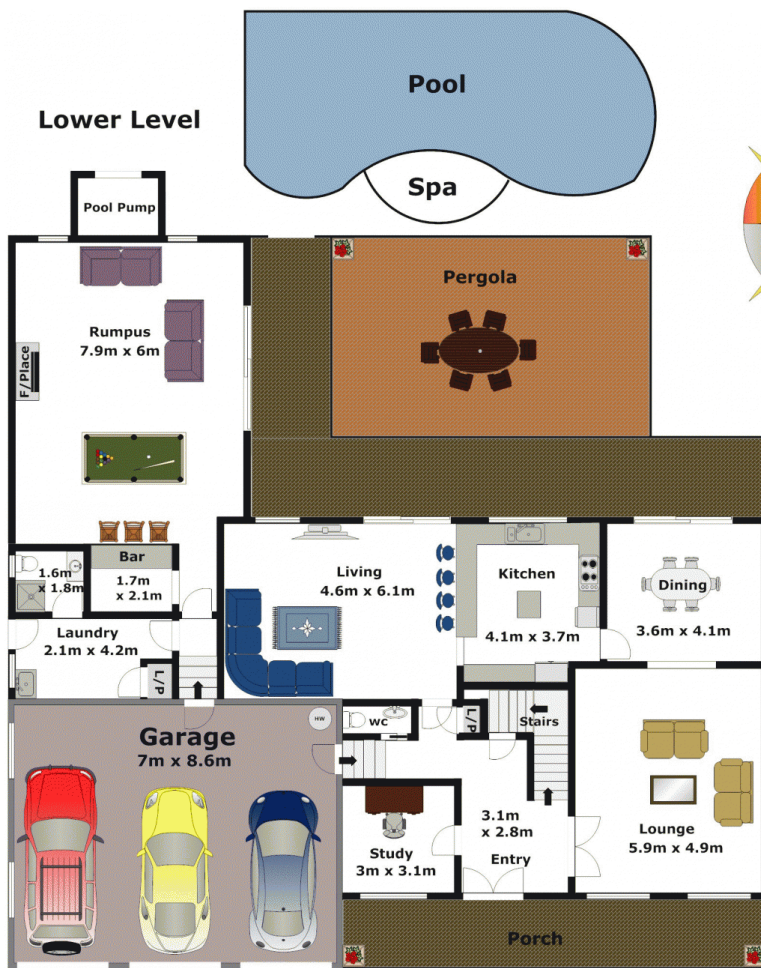
5 🛏 3 🚿 3 🚗

Located in the highly sought after First Farm Drive Estate sits this 52 square (approximately) family residence. With double brick construction downstairs and brick veneer upstairs, this home is solidly built and is being offered for only the 2nd time - rarely do we see homes built like this. The home boasts five bedrooms plus separate study and three fully renovated bathrooms including the ensuite. Huge formal & informal living areas for the family to spread out and enormous private rumpus room with high vaulted ceilings & wet bar. Continue out through the living areas featuring Cedar stacker doors that lead to the in-ground pool & spa with winter pool cover. The huge 1025sqm landscaped block features established fruit trees, a huge undercover entertaining area and a grassed rear yard for the kids to play. Other great features include a massive triple lock-up garage with internal access, ducted air-conditioning, alarm system, additional separate toilet

Building Size : 50 sqm
Land Size : 1025 sqm
View : <https://www.gilmour.com.au/sale/nsw/hills/castle-hill/residential/house/5620050>



Gilmour Property Agents
02 9899 3311



APPROXIMATE LOWER LEVEL FLOOR AREA: 185m² (20sq)
 APPROXIMATE UPPER LEVEL FLOOR AREA: 100m² (11sq)
 APPROXIMATE GARAGE FLOOR AREA: 60m² (6sq)

APPROXIMATE INTERNAL FLOOR AREA: 345m² (37sq)

DISCLAIMER:

Whilst every attempt has been made to ensure the accuracy of the floor plan contained here, no responsibility is taken for any error, omission, or misstatement. This floor plan is intended as a guide only, for representation purposes only, and should be used as such by any prospective purchaser. No guarantee or warranties can be given, and any person using this information should rely on their own enquires.

