



**CASTLE HILL**

3  1  1 

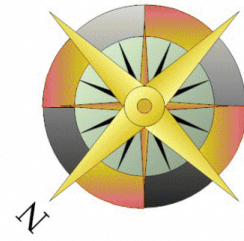
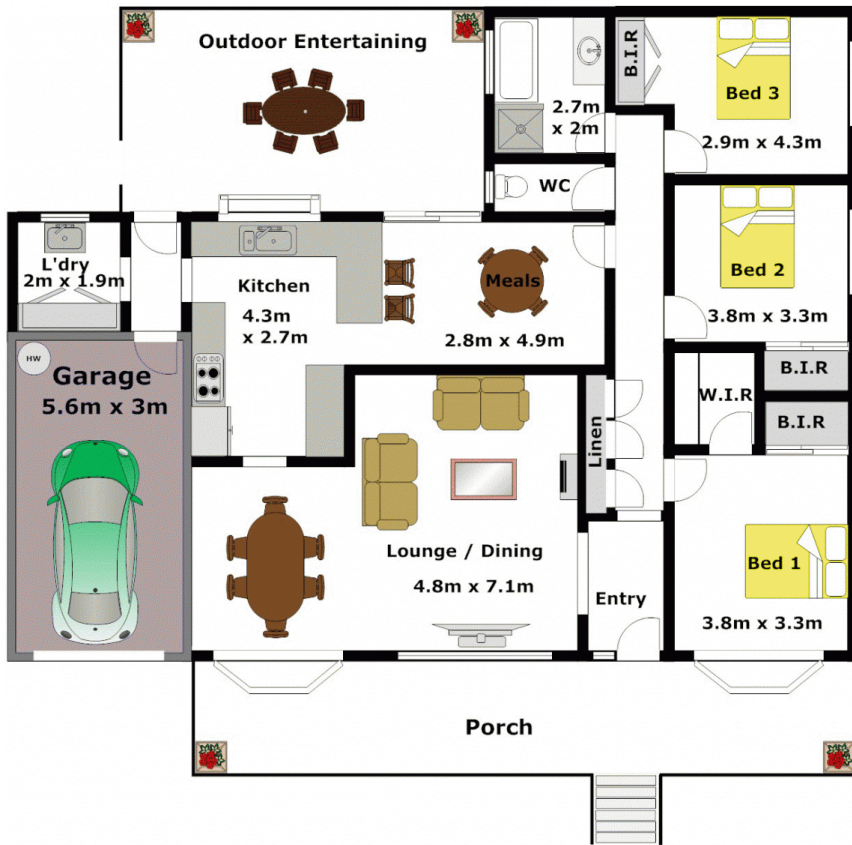
This character home that has been exceptionally looked after is perfect for a new family to create a lifetime of memories. Situated on the high side of the street on a 746sqm block and offering three large bedrooms with built-in wardrobes to all and a walk-in robe to the master. The home is much larger than you think with a generous combined lounge/dining room and a massive updated kitchen with meals area adjoining. With a single lock-up garage, updated bathroom and minutes away from all amenities-you can walk to everything and only 150m from Castle Towers. This home is all about location, location, location!

SOLD 16th September, 2011

**Land Size** : 746 sqm  
**View** : <https://www.gilmour.com.au/sale/nsw/hills/castle-hill/residential/house/5620055>



**Gilmour Property Agents**  
**02 9899 3311**



APPROXIMATE INTERNAL FLOOR AREA: 120m<sup>2</sup> (13sq)  
 APPROXIMATE GARAGE FLOOR AREA: 17m<sup>2</sup> (2sq)

**APPROXIMATE TOTAL INTERNAL FLOOR AREA: 137m<sup>2</sup> (15sq)**

**DISCLAIMER:**

Whilst every attempt has been made to ensure the accuracy of the floor plan contained here, no responsibility is taken for any error, omission, or misstatement. This floor plan is intended as a guide only, for representation purposes only, and should be used as such by any prospective purchaser. No guarantee or warranties can be given, and any person using this information should rely on their own enquires.

