






## CASTLE HILL

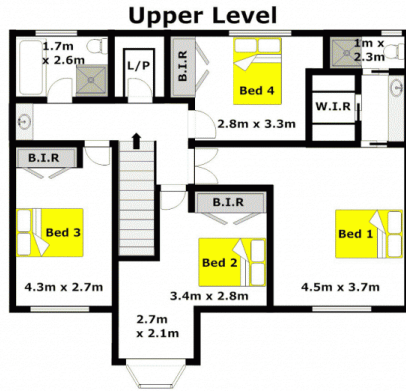
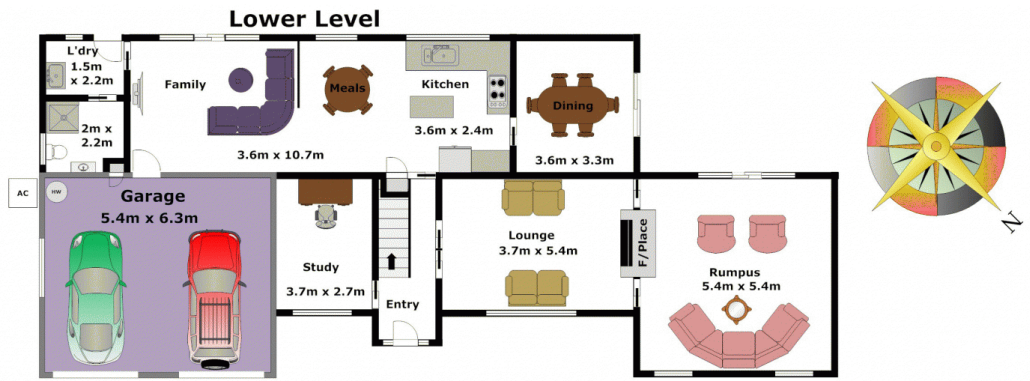
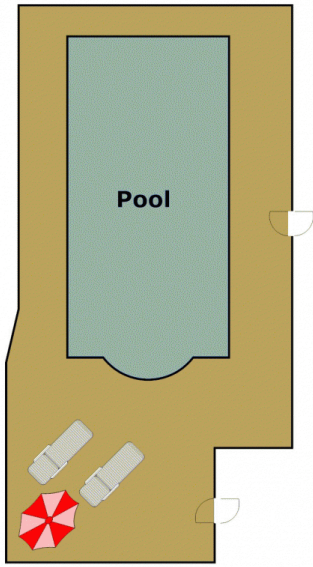
4  3  2 

This terrific all-brick Tudor style family home is located in the popular "New England Estate on the high side of a quiet crescent amongst other quality homes. With approximately 43 squares of space sitting on a 931sqm block, the home boasts four double bedrooms with built-in wardrobes & a walk-in robe plus ensuite to the master bedroom. Large windows to all rooms means plenty of light streaming in & beautiful views. Great living areas such as the lounge & dining with a desirable fireplace feature, large family room which lends itself to a home theatre or office, separate rumpus and a study. The level private yard plus a large covered & enclosed salt water in-ground swimming pool enables year-round entertaining. Enjoy the sunny north-east aspect and an awesome neighborhood. Three bathrooms means no queues in the morning and seasonal variations in temperatures are well handled by ducted reverse-cycle air

**Building Size** : 43 sqm  
**Land Size** : 931 sqm  
**View** : <https://www.gilmour.com.au/sale/nsw/hills/castle-hill/residential/house/5620057>



**Craig Alexis**  
02 9899 3311



APPROXIMATE LOWER LEVEL FLOOR AREA: 126m<sup>2</sup> (14sq)  
 APPROXIMATE UPPER LEVEL FLOOR AREA: 79m<sup>2</sup> (8sq)  
 APPROXIMATE GARAGE FLOOR AREA: 34m<sup>2</sup> (4sq)

**APPROXIMATE INTERNAL FLOOR AREA: 239m<sup>2</sup> (26sq)**

**DISCLAIMER:**

Whilst every attempt has been made to ensure the accuracy of the floor plan contained here, no responsibility is taken for any error, omission, or misstatement. This floor plan is intended as a guide only, for representation purposes only, and should be used as such by any prospective purchaser. No guarantee or warranties can be given, and any person using this information should rely on their own enquires.

