



## CASTLE HILL

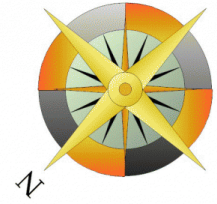
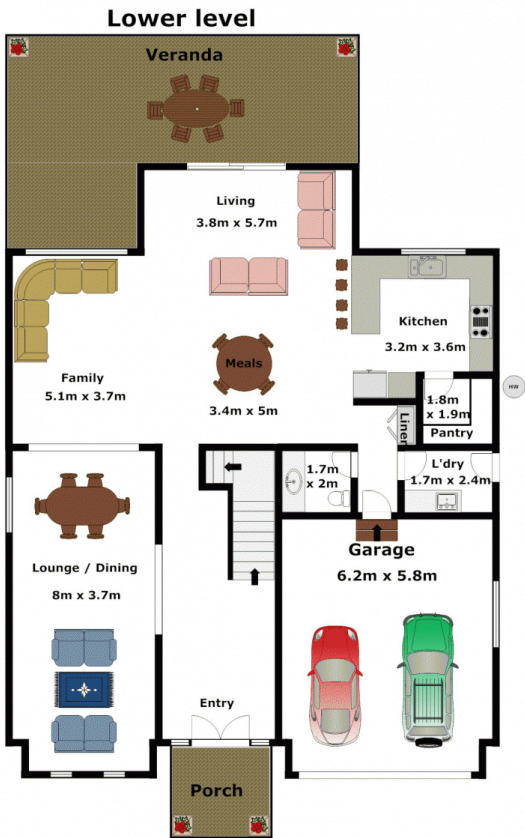
4 3 2

This stunning four year old Westminster home with a rendered facade will impress with spaciousness and light throughout. Boasting four massive bedrooms and study/fifth bedroom, plus a walk-in robe and ensuite to the master bedroom. Expansive living areas are compliment by the open plan layout with formal lounge & dining, upstairs rumpus or teenagers retreat and family rooms with meals area adjoining the large gourmet kitchen. Open up the French doors to the alfresco entertaining area with easy care gardens and a grassed area. The home is complimented by the high ceilings, porcelain tiles throughout downstairs, polished timber flooring upstairs and feature cutouts in the common areas. Other quality features & inclusions are the ducted reverse cycle air-conditioning, automatic double lock-up garage with internal access and a flat, low maintenance block with outstanding street presence. This executive style home is

**View :** <https://www.gilmour.com.au/sale/nsw/hills/castle-hill/residential/house/5620060>



**Gilmour Property Agents**  
**02 9899 3311**



APPROXIMATE LOWER LEVEL FLOOR AREA: 156m<sup>2</sup> (17sq)  
 APPROXIMATE UPPER LEVEL FLOOR AREA: 191m<sup>2</sup> (21sq)  
 APPROXIMATE GARAGE FLOOR AREA: 36m<sup>2</sup> (4sq)

**APPROXIMATE INTERNAL FLOOR AREA: 383m<sup>2</sup> (42sq)**

**DISCLAIMER:**

Whilst every attempt has been made to ensure the accuracy of the floor plan contained here, no responsibility is taken for any error, omission, or misstatement. This floor plan is intended as a guide only, for representation purposes only, and should be used as such by any prospective purchaser. No guarantee or warranties can be given, and any person using this information should rely on their own enquires.

