






CASTLE HILL

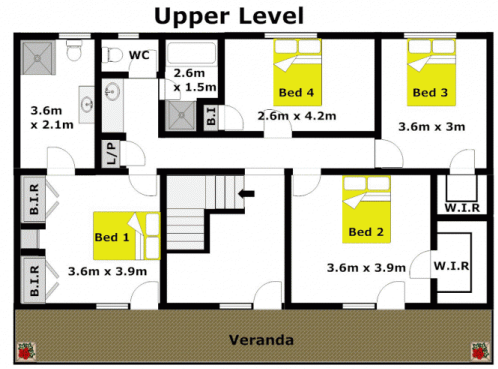
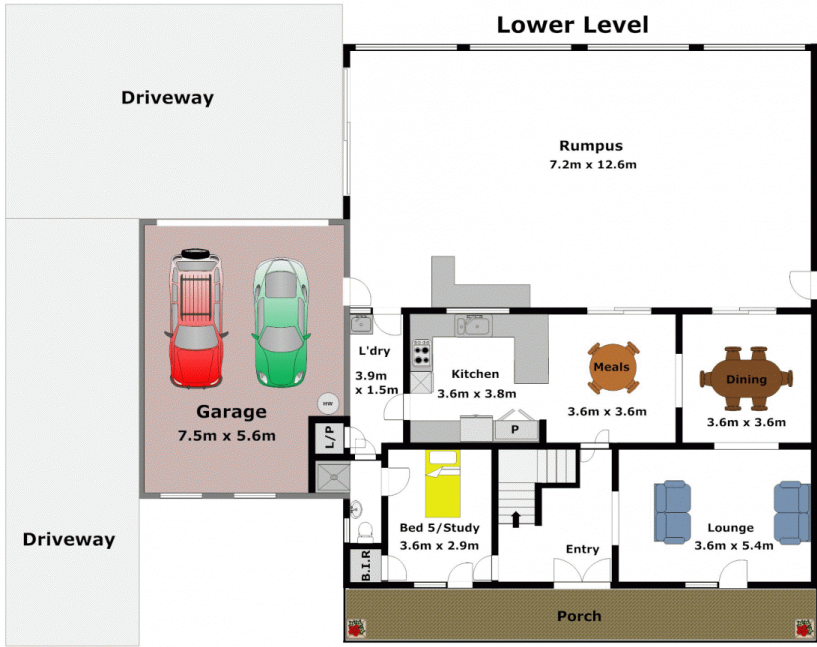
5  3  2 

High, proud & handsome is this family home on the high side of a quiet, tree lined avenue in the popular New England Estate. Sitting on a 932sqm block and boasting five bedrooms, two with renovated ensuites including the downstairs bedroom. The home provides a clever layout for spacious family living with a lounge & dining, upstairs sitting room and a family meals area off the renovated Polyurethane kitchen with soft close drawers. In addition there is a massive rumpus room of 12.5x6.5m which is ideal for serious hobbies, hosting amazing parties or even learn/teach ballroom dancing! The oversized, automatic double-lock up garage with internal access would house four small cars or give you a workshop or storage space. Ducted air-conditioning helps with the season variations in temperature. Walk to Castle Hill RSL, transport including express bus, Castle Towers and Castle Hill High School. A great combination of features-inspect today!

Land Size : 932 sqm
View : <https://www.gilmour.com.au/sale/nsw/hills/castle-hill/residential/house/5620099>



Craig Alexis
02 9899 3311



DISCLAIMER:

Whilst every attempt has been made to ensure the accuracy of the floor plan contained here, no responsibility is taken for any error, omission, or misstatement. This floor plan is intended as a guide only, for representation purposes only, and should be used as such by any prospective purchaser. No guarantee or warranties can be given, and any person using this information should rely on their own enquires.

