



## CASTLE HILL

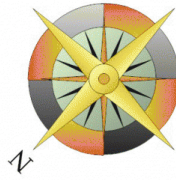
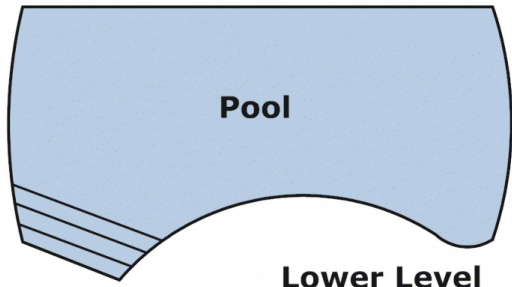
4 3 2

Situated on the high side of a quiet, sought after street is this lovely two storey family home with so much to offer. Boasting four bedrooms with built-in robes to three and the master bedroom features a walk-in robe plus ensuite. Family prerequisites have been catered for with the spacious living areas that includes the generous lounge, formal dining area, casual meals/family area adjoining the updated gourmet eat-in kitchen and a rumpus room with a slow combustion fireplace. Enjoy entertaining with the large covered pergola and you can cool off in the salt water fenced in-ground pool plus the kids can play in the good size grassed yard attached to this 930sqm block. Other great features include a total of three bathrooms, ducted air conditioning upstairs helps control the seasonal fluctuations in temperature, an automatic double lock up garage with internal access and there is plenty space in the front yard to park more vehicles. Close & convenient to all amenities

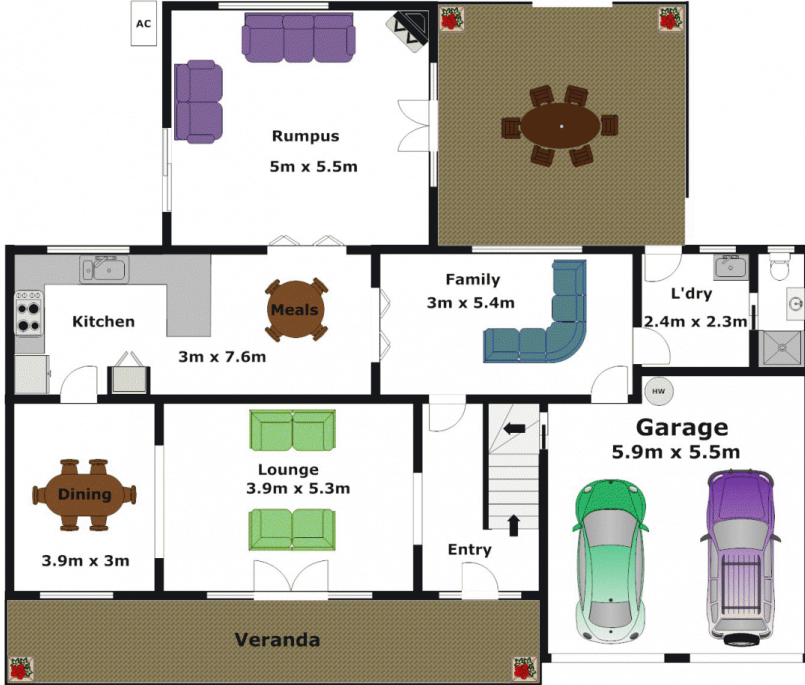
**Land Size** : 930 sqm  
**View** : <https://www.gilmour.com.au/sale/nsw/hills/castle-hill/residential/house/5620103>



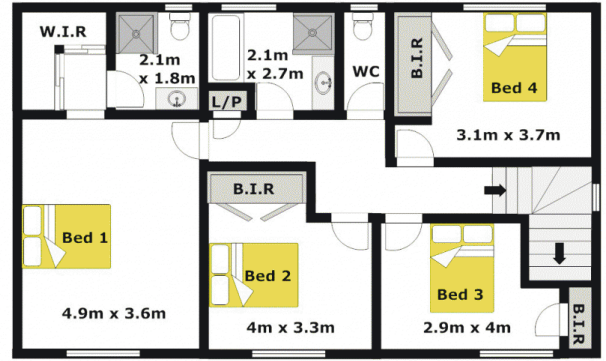
**Craig Alexis**  
02 9899 3311



**Lower Level**



**Upper Level**



**DISCLAIMER:**

Whilst every attempt has been made to ensure the accuracy of the floor plan contained here, no responsibility is taken for any error, omission, or misstatement. This floor plan is intended as a guide only, for representation purposes only, and should be used as such by any prospective purchaser. No guarantee or warranties can be given, and any person using this information should rely on their own enquires.

