



CASTLE HILL

3 2 2

Shhhh...Located in a whisper quiet cul-de-sac is this contemporary split level family home on 749.5sqm block in the heart of Castle Hill. The home offers three bedrooms which all enjoy district views from the balcony and built-in robes plus an en-suite to the master bedroom. With generous living areas of a large lounge, a separate dining room and a family/meals area off the functional kitchen with plenty of cupboards. The separate study/potential fourth bedroom also has its own toilet and the easy to maintain polished cypress pine floorboards add style & character. Continue outside to the paved patio area which is ideal for entertaining and enjoy the sunny north aspect to the backyard whilst keeping an eye on the kids playing. Solar hot water & solar electricity production certain help the family budget department plus there is undercover accommodation for 2 cars and air conditioning via split air-conditioners & ceiling fans to help on the cusp of the

Land Size : 749.5 sqm

View : <https://www.gilmour.com.au/sale/nsw/hills/castle-hill/residential/house/5620192>

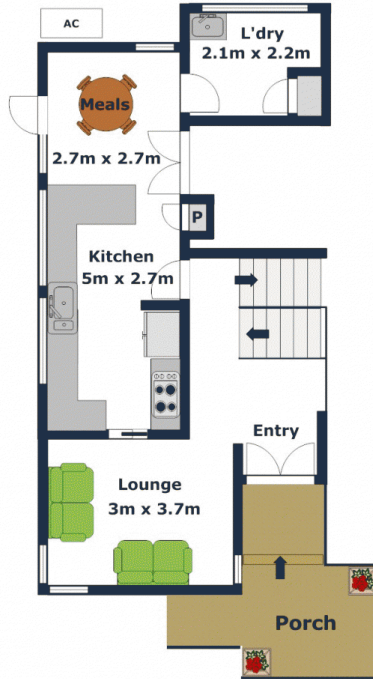


Craig Alexis
02 9899 3311

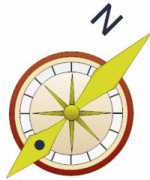
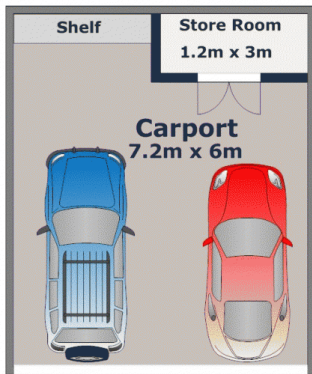
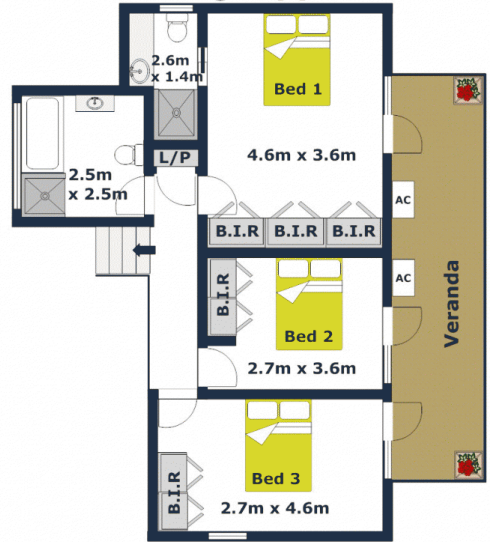
Lower Level



Ground Level



Upper Level



DISCLAIMER:

Whilst every attempt has been made to ensure the accuracy of the floor plan contained here, no responsibility is taken for any error, omission, or misstatement. This floor plan is intended as a guide only, for representation purposes only, and should be used as such by any prospective purchaser. No guarantee or warranties can be given, and any person using this information should rely on their own enquiries.