



WEST PENNANT HILLS

4  3  2 

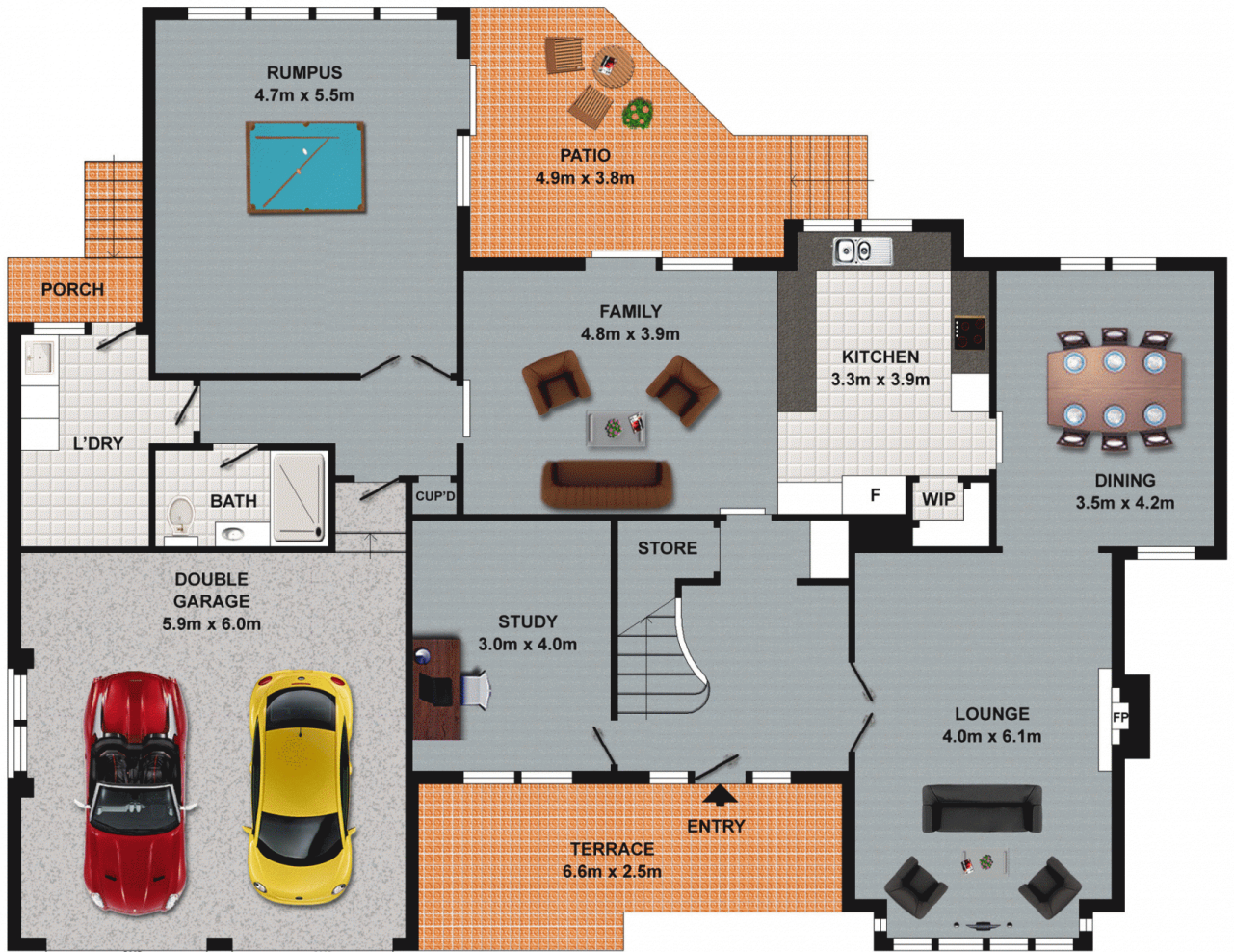
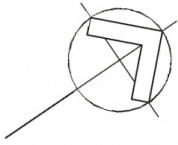
Located in the highly sought after Valley & in the Murray Farm catchment area is this charming, large family home sitting on a private 909sqm block. The home was built by Arthur Billyard homes and features four great size bedrooms all with wardrobes & three bathrooms including the en-suite to the master bedroom. Immediately savour the high 9 foot ceilings and spacious living areas of a formal lounge & dining with a cosy open fireplace, separate rumpus room with polished floorboards, separate study and a meals/family room adjoining the large gas kitchen. The covered rear pergola is a perfect set up for entertaining by the sparkling in-ground pool and there is a large grassed area for the kids to play.

It's all about location, location, location-inspect today!
SOLD 22 January, 2013

Price : \$ 950,000
Land Size : 909 sqm
View : <https://www.gilmour.com.au/sale/nsw/hills/west-pennant-hills/residential/house/5620201>



Gilmour Property Agents
02 9899 3311



DISCLAIMER
DIMENSIONS ARE APPROXIMATE AND SHOULD ONLY BE USED AS A GUIDE
THEY ARE NOT TO SCALE AND NO LIABILITY WILL BE ACCEPTED.