



CASTLE HILL

4 3 2

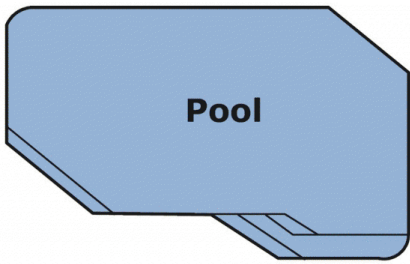
Calling all entertainers to enjoy this immaculate family home on a 717sqm block set on the high side of a quiet crescent. Offering four bedrooms with built-in robes to all plus there is a separate study and two bathrooms including the en-suite. There is oodles of living space with a lounge, a generous dining room, a family room and a separate rumpus room with exposed beams. The brand new French provincial kitchen with a freestanding English "Elan Falcon" 1200mm gas & electric stove & oven will inspire the chef in you to create gourmet cuisine. Relax outside under the covered & tiled entertainment areas whilst you are planning your next dinner party & cool off in the refreshing fenced, salt-water pool. Internal access to the automatic double lock-up garage and the second driveway allows you to park a truck, boat or trailer. Climate control is assisted by the split air-conditioners & slow combustion fire place. Move in, unpack and enjoy!

Land Size : 717 sqm

View : <https://www.gilmour.com.au/sale/nsw/hills/castle-hill/residential/house/5620220>

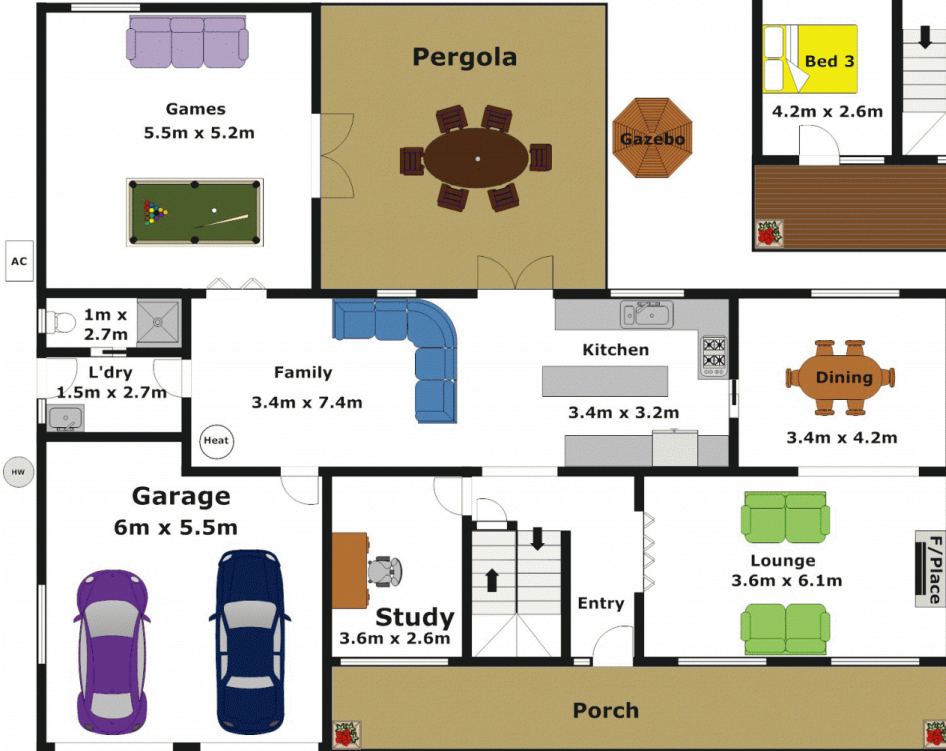


Craig Alexis
02 9899 3311

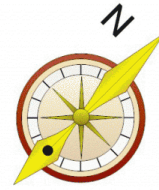
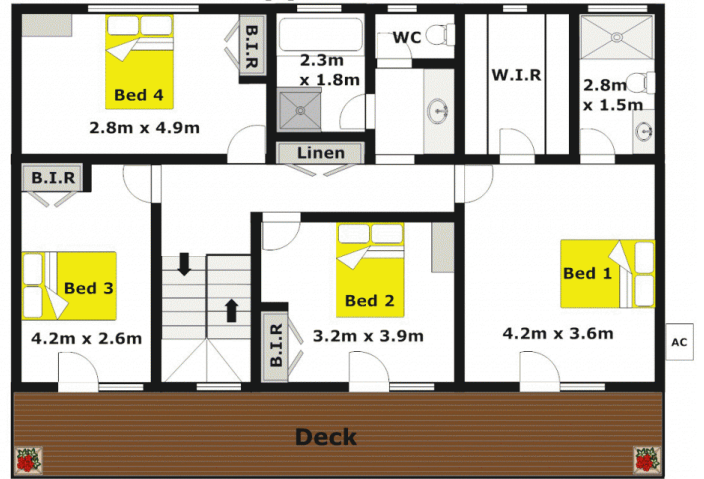


Pool

Ground Level



Upper Level



DISCLAIMER:

Whilst every attempt has been made to ensure the accuracy of the floor plan contained here, no responsibility is taken for any error, omission, or misstatement. This floor plan is intended as a guide only, for representation purposes only, and should be used as such by any prospective purchaser. No guarantee or warranties can be given, and any person using this information should rely on their own enquiries.