



CASTLE HILL

4  3  2 

Set on 973sqm within enviable access to Samuel Gilbert Public is this fantastic family home. Boasting four bedrooms plus a separate study, with built-in robes to three bedrooms and a walk-in robe plus en-suite to the master bedroom. Spacious living areas for the whole family include a formal lounge & dining, a generous rumpus room with cathedral ceilings & fireplace and a meals area adjoining the functional kitchen complete with a breakfast bar. Continue out to the covered pergola area that overlooks the huge backyard perfect for hosting friend & families and watching the children run around. Also offering a double lock-up garage, split system air-conditioning and a total of three bathrooms. Convenient to all amenities including Knightsbridge Shopping Centre, public transport and schools.

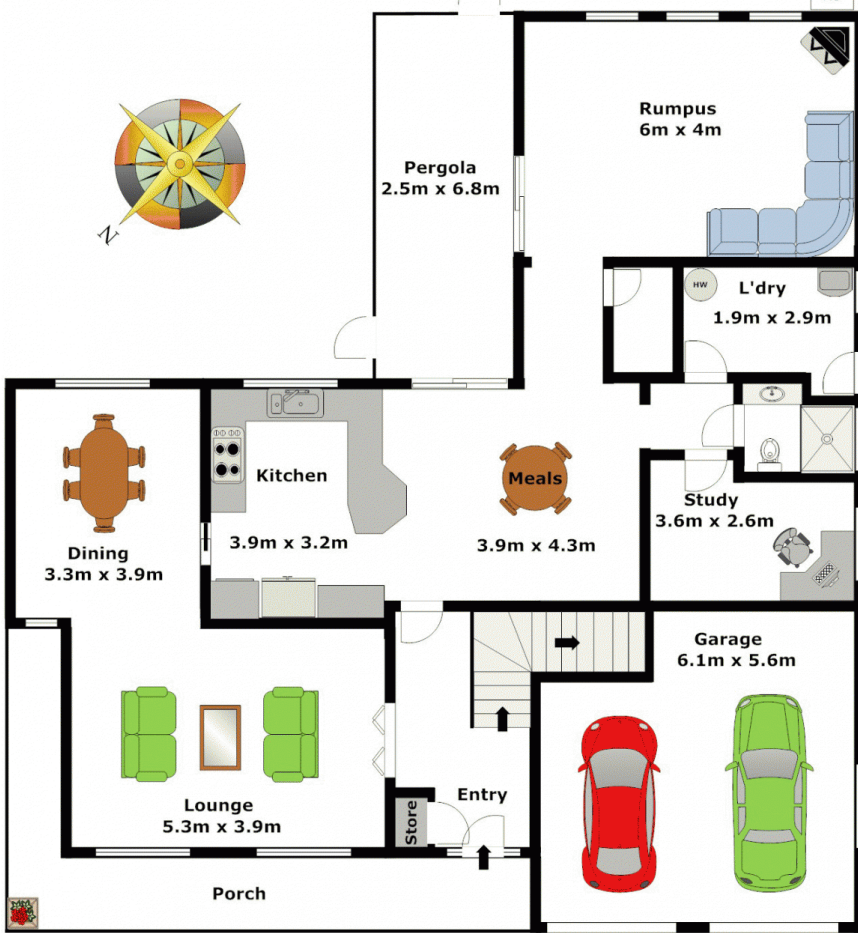
SOLD 25 January, 2013

Land Size : 973 sqm
View : <https://www.gilmour.com.au/sale/nsw/hills/castle-hill/residential/house/5620221>

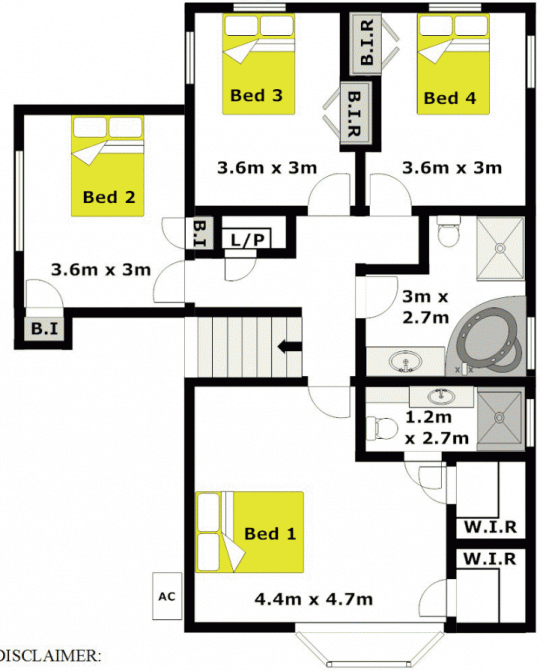


Gilmour Property Agents
02 9899 3311

Ground Level



Upper Level



DISCLAIMER:

Whilst every attempt has been made to ensure the accuracy of the floor plan contained here, no responsibility is taken for any error, omission, or misstatement. This floor plan is intended as a guide only, for representation purposes only, and should be used as such by any prospective purchaser. No guarantee or warranties can be given, and any person using this information should rely on their own enquiries.