






## CASTLE HILL

4  2  2 

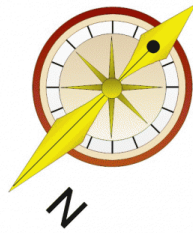
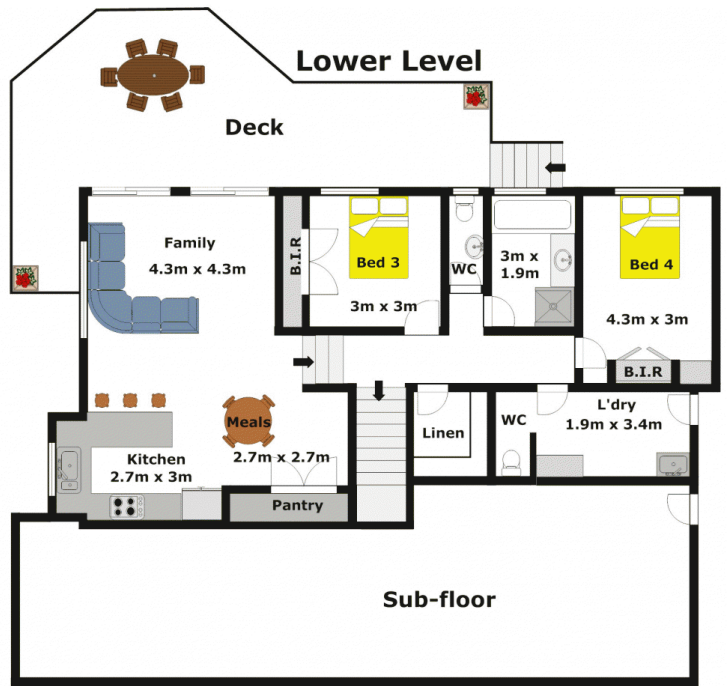
Get back to nature with this home in an ideal location at the end of a quiet cul-de-sac overlooking a lovely bush reserve. This immaculate & well built architect designed family home on 795.8sqm has so much to offer with 9 foot ceilings & great living space. There is a generous master bedroom with a walk-in wardrobe and an updated en-suite along with the main bathroom and the three other bedrooms also have built-in wardrobes. The open plan lounge & dining room boasts cathedral ceilings and opens out onto a magnificent deck to take in the peaceful setting & listen to the birds. There is a family/meals area off the large eat-in kitchen that features gas cooking and a walk-in pantry and there is also a family relaxing area too. Continue outside to another spacious deck ideal for entertaining family & friends which leads out to established gardens and a grassed yard. Other great features include an oversized double lock-up garage with internal access and the big laundry has plenty of room

**Land Size** : 795.8 sqm

**View** : <https://www.gilmour.com.au/sale/nsw/hills/castle-hill/residential/house/5620233>



**Craig Alexis**  
02 9899 3311



**Gilmour**  
PROPERTY AGENTS

**DISCLAIMER:**

Whilst every attempt has been made to ensure the accuracy of the floor plan contained here, no responsibility is taken for any error, omission, or misstatement. This floor plan is intended as a guide only, for representation purposes only, and should be used as such by any prospective purchaser. No guarantee or warranties can be given, and any person using this information should rely on their own enquiries.