



CASTLE HILL

5 3 2

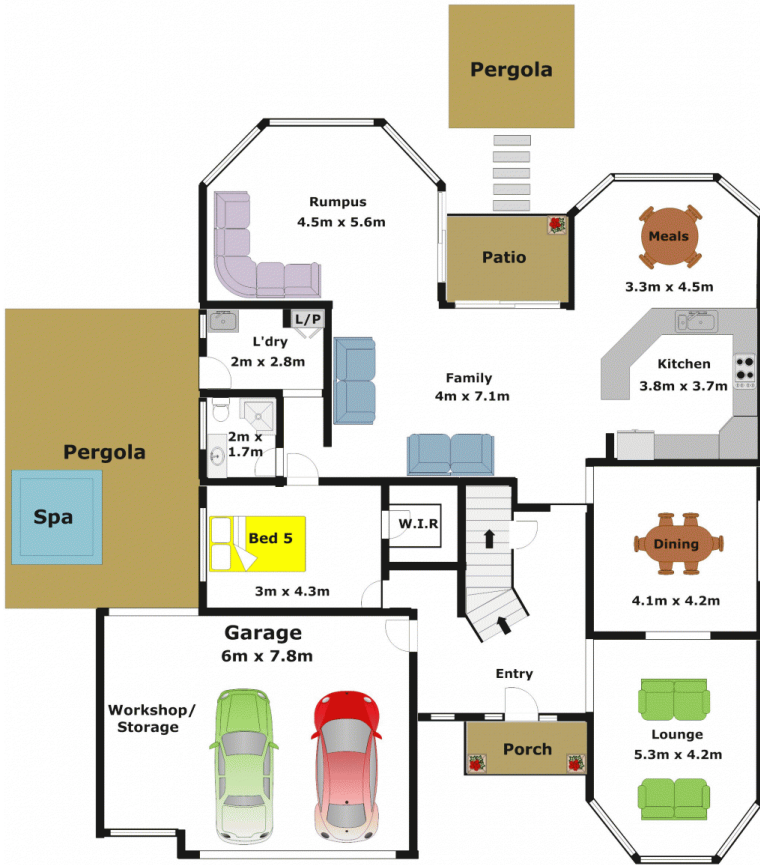
This one owner home is in absolutely immaculate condition inside & out and boasts style & quality of build by Provincial Homes. Sitting on 660sqm and boasting five genuine bedrooms, with walk-in robes to four and a total of three bathrooms including an en-suite to the downstairs fifth bedroom which could serve as in-law accommodation. The functional floor plan of the home encourages spacious living for the whole family with the generous sunken formal lounge room, separate dining, a open plan tiled family room and a meals/conservatory area adjoining the granite kitchen with gas cooking. Teenagers & children will love their own space for their toys & gadgets with the tiled rumpus room and upstairs retreat/TV area. Enjoy alfresco entertaining under the covered pergola area and relaxing in the outdoor 6 seater, heated spa. The private & low maintenance yard features established hedges and a garden/storage shed. Other great features of this home

Land Size : 660 sqm
View : <https://www.gilmour.com.au/sale/nsw/hills/castle-hill/residential/house/5620239>

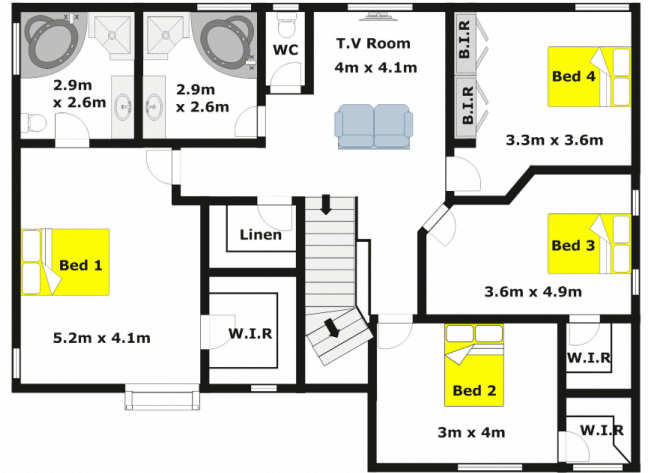


Gilmour Property Agents
02 9899 3311

Ground Level



Upper Level



DISCLAIMER:

Whilst every attempt has been made to ensure the accuracy of the floor plan contained here, no responsibility is taken for any error, omission, or misstatement. This floor plan is intended as a guide only, for representation purposes only, and should be used as such by any prospective purchaser. No guarantee or warranties can be given, and any person using this information should rely on their own enquiries.