



## CASTLE HILL

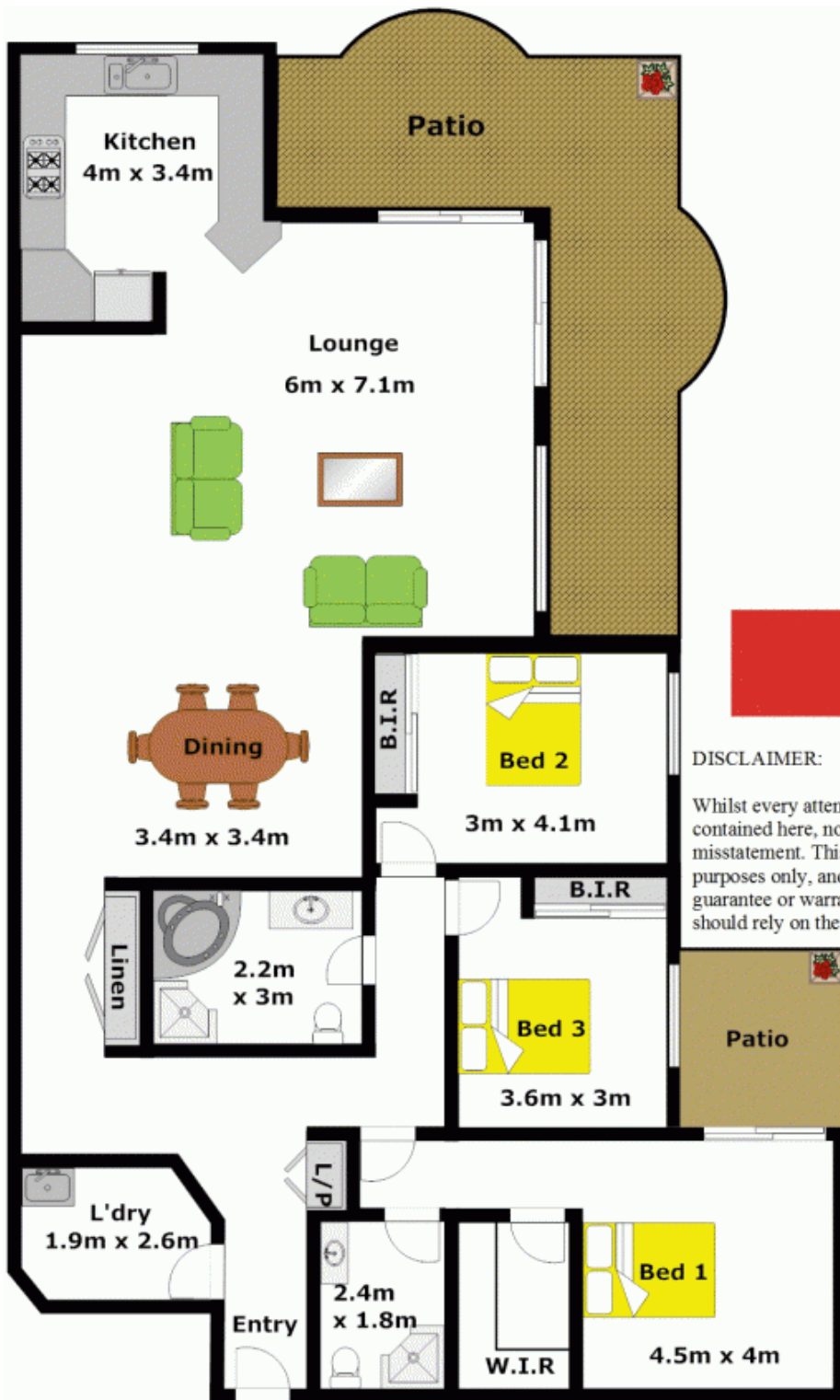
3  2  2 

This fantastic north facing apartment is located in the exclusive security building Jessica's Court of only 27 apartments with the majority owner occupied and set in a peaceful & harmonious surrounding. The total area of apartment is 207sqm and offering three spacious bedrooms, two with built-in wardrobes and the generous master bedroom features a walk-in robe and an en-suite. The timber flooring throughout the apartment compliments the huge open plan living & dining area that flows into the spacious & contemporary CaesarStone kitchen with gas cooking. Enjoy relaxing & entertaining on the two balconies that overlook the complex gardens & greenery plus there is a gas connection on the main balcony perfect for BBQ's. Other great features include split air-conditioning, meticulously maintained gardens and common areas within the complex and a double lock-up garage plus separate lock-up storage room. Strata Levies of \$850.00 per

**Building Size** : 22 sqm  
**View** : <https://www.gilmour.com.au/sale/nsw/hills/castle-hill/residential/unit/5620244>



**Gilmour Property Agents**  
**02 9899 3311**



**DISCLAIMER:**

Whilst every attempt has been made to ensure the accuracy of the floor plan contained here, no responsibility is taken for any error, omission, or misstatement. This floor plan is intended as a guide only, for representation purposes only, and should be used as such by any prospective purchaser. No guarantee or warranties can be given, and any person using this information should rely on their own enquiries.

