



## CASTLE HILL

3 1

Ideally located in the popular Roxborough Park Estate in a quiet avenue is this family home perfect for first home buyers or investors. Sitting of 752.2sqm and offering three bedrooms with built-in robes to all and the single lock-up garage has been converted to another bedroom with a built-in wardrobe or could be used as a second living area. Good living space with an oversized lounge & separate dining area & a cosy sunroom. Whilst the functional kitchen & bathroom are original and are ready for updating to your own specification & taste. The large in-ground swimming pool is perfect to cool off in the warmer months and entertain from the generous decking area. The ducted air-conditioning looks after climate control and there is cable TV access with cable internet to be installed. Close to Gilroy College, Excelsior primary school, city transport, the local swimming centre & gym. Inspect sooner than later before it's...gone!

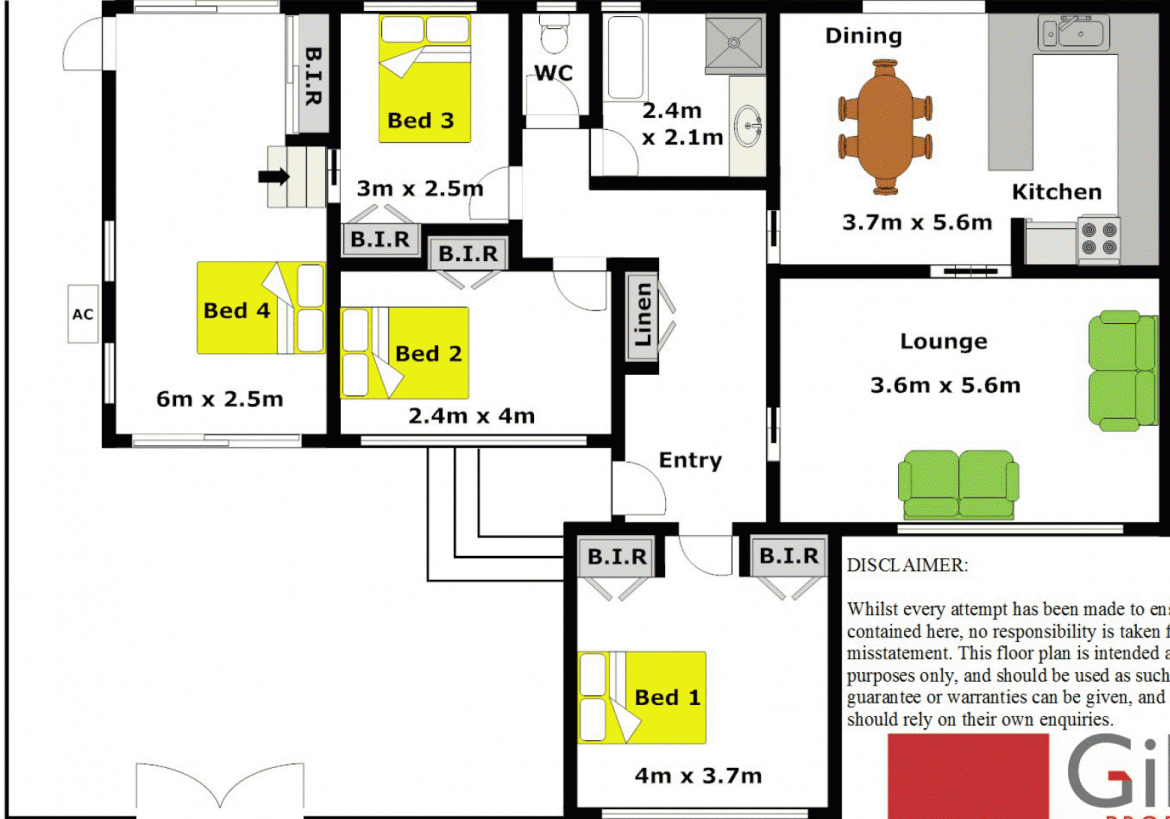
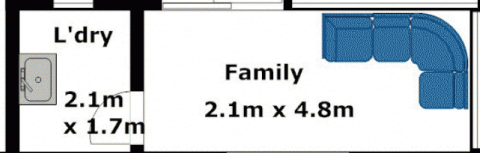
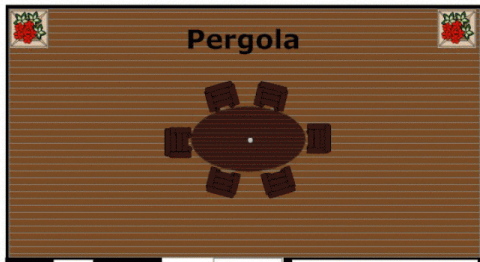
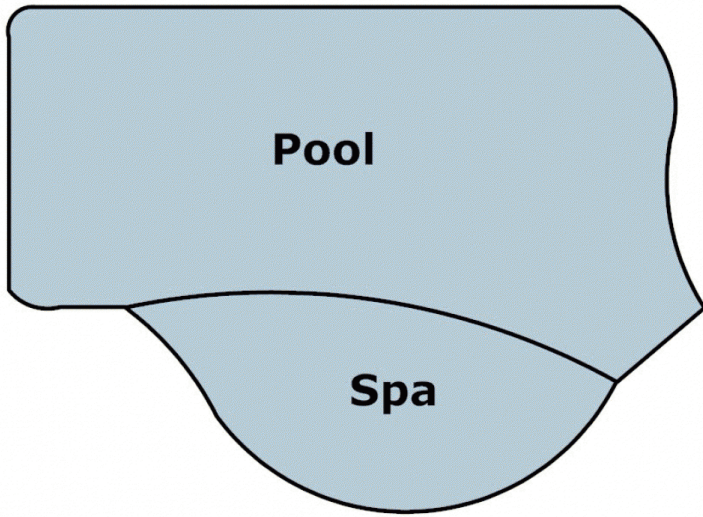
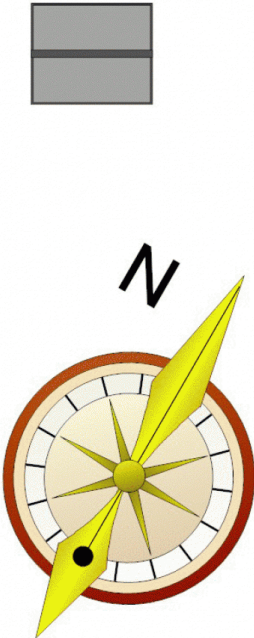
**Land Size** : 752.5 sqm

**View** : <https://www.gilmour.com.au/sale/nsw/hills/castle-hill/residential/house/5620250>



**Craig Alexis**  
02 9899 3311





**DISCLAIMER:**

Whilst every attempt has been made to ensure the accuracy of the floor plan contained here, no responsibility is taken for any error, omission, or misstatement. This floor plan is intended as a guide only, for representation purposes only, and should be used as such by any prospective purchaser. No guarantee or warranties can be given, and any person using this information should rely on their own enquiries.

