



CASTLE HILL

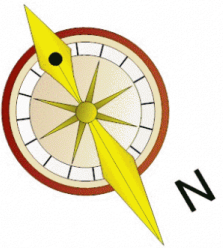
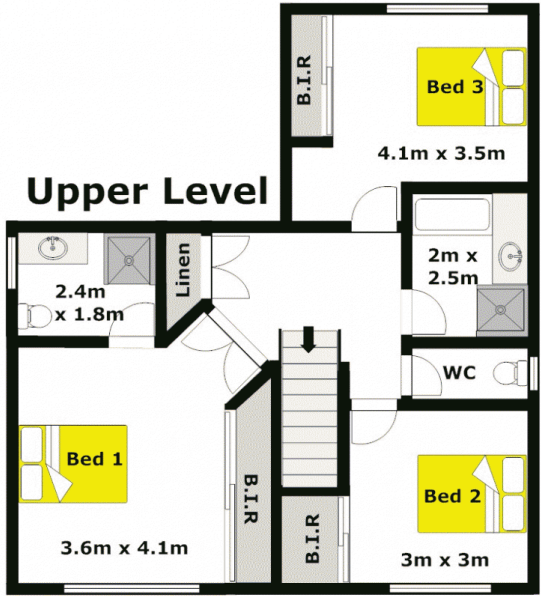
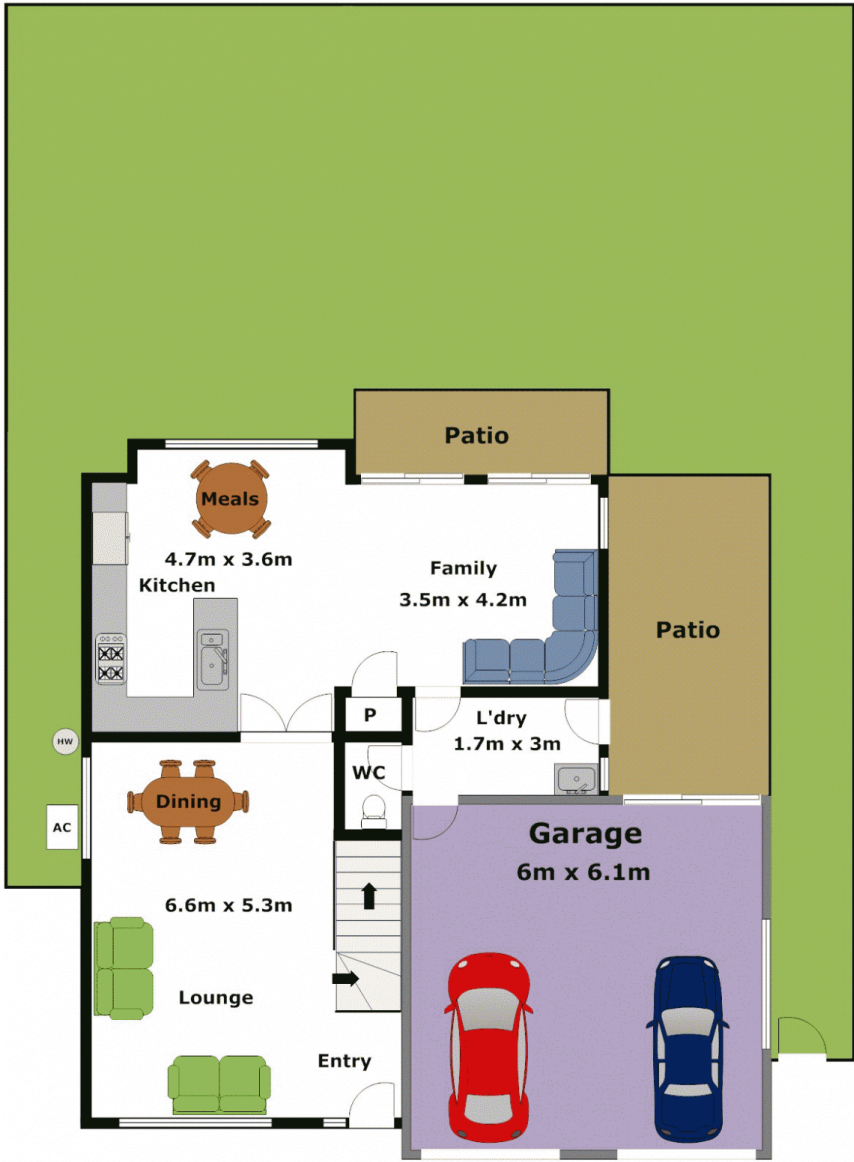
3 2 2

Located at the end of a quiet cul-de-sac, sits this low maintenance home that has so much to see & offer. This two storey family home has a sunny north aspect and is just a level walk to the shops & M2 city bus which is just around the corner. Featuring three bedrooms, all with built-in wardrobes and two bathrooms including the en-suite to the generous master bedroom. There is great living space of a lounge & dining room, a meals area off the functional gas kitchen and a family/relaxing area close by. Continue outside to a level, safe yard & there are two tennis courts in the estate for those who enjoy a quiet game. Completing the package of this great home is the internal access to the automatic double lock-up garage, an additional separate toilet downstairs & there are two split air conditioners to help with the seasonal variations in temperature. Relax in this English village environment & inspect today!

Land Size : 461 sqm
View : <https://www.gilmour.com.au/sale/nsw/hills/castle-hill/residential/house/5620276>



Craig Alexis
02 9899 3311



DISCLAIMER: Whilst every attempt has been made to ensure the accuracy of the floor plan contained here, no responsibility is taken for any error, omission, or misstatement. This floor plan is intended as a guide only, for representation purposes only, and should be used as such by any prospective purchaser. No guarantee or warranties can be given, and any person using this information should rely on their own enquiries.