






13/12-18 Sherwin Avenue CASTLE HILL NSW

2  2  2 

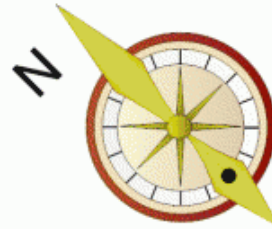
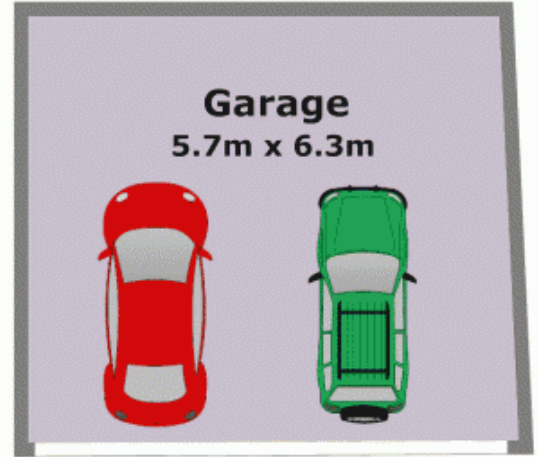
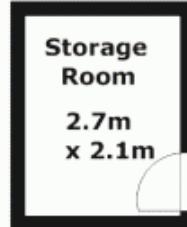
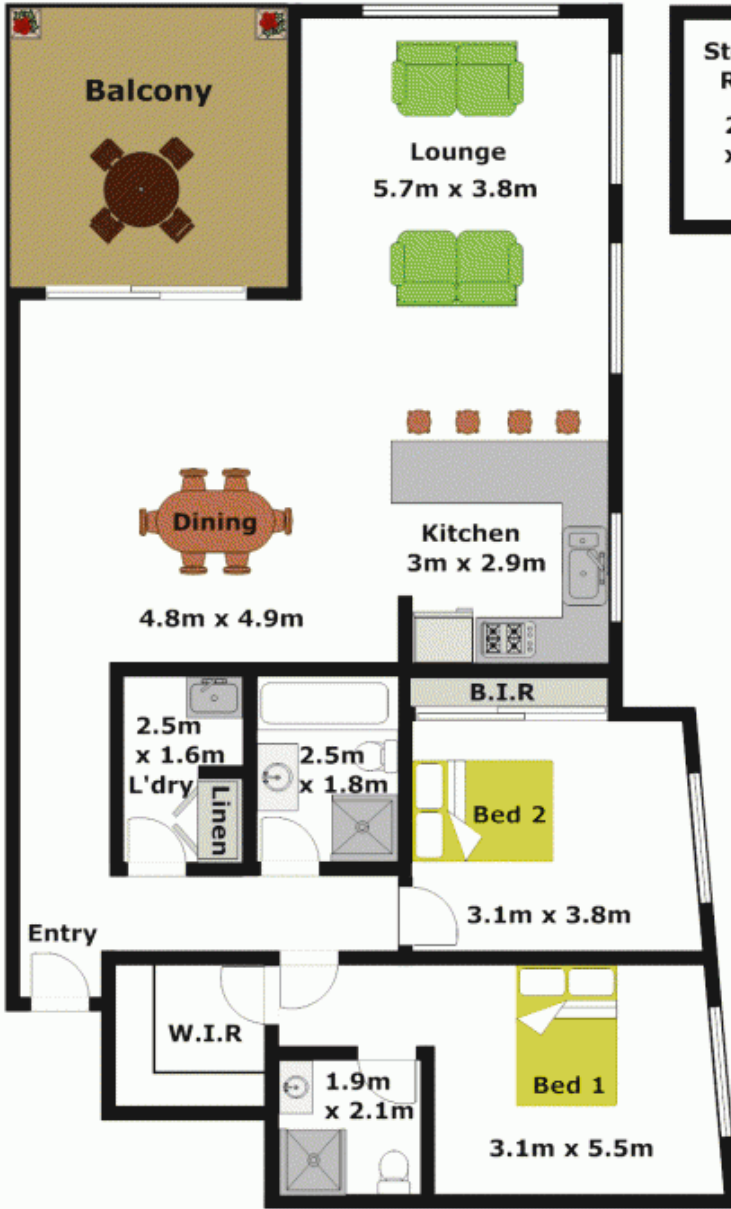
This beautiful ground floor apartment is located in a security complex in central Castle Hill on a quiet street. Offering two generous bedrooms, with a walk-in robe and en-suite to the master and a built-in robe to the second bedroom. The high 10 foot ceilings throughout add to the feeling of light, spaciousness especially in the large open plan living & dining area with new timber flooring. Cook up a feast for friends & family in the gourmet kitchen with quality stainless steel appliances, gas cooking and CaesarStone bench tops. Enjoy alfresco dining on the private covered balcony or relax in the common areas of the complex which features a BBQ area and the kids will love to play in the adjoining lovely park. With other great inclusions & features of an automatic double lock-up garage with a storage area, an intercom, ducted air-conditioning and a gas heating outlet. Situates walking distance to Castle Towers, schools, library, restaurants and

Land Size : 162 sqm

View : <https://www.gilmour.com.au/sale/nsw/hills/castle-hill/residential/unit/5620315>



Gilmour Property Agents
02 9899 3311



DISCLAIMER:

Whilst every attempt has been made to ensure the accuracy of the floor plan contained here, no responsibility is taken for any error, omission, or misstatement. This floor plan is intended as a guide only, for representation purposes only, and should be used as such by any prospective purchaser. No guarantee or warranties can be given, and any person using this information should rely on their own enquiries.