






**7/48-50 Dobson Crescent BAULKHAM HILLS NSW**

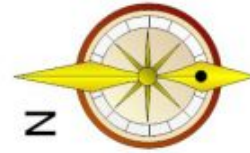
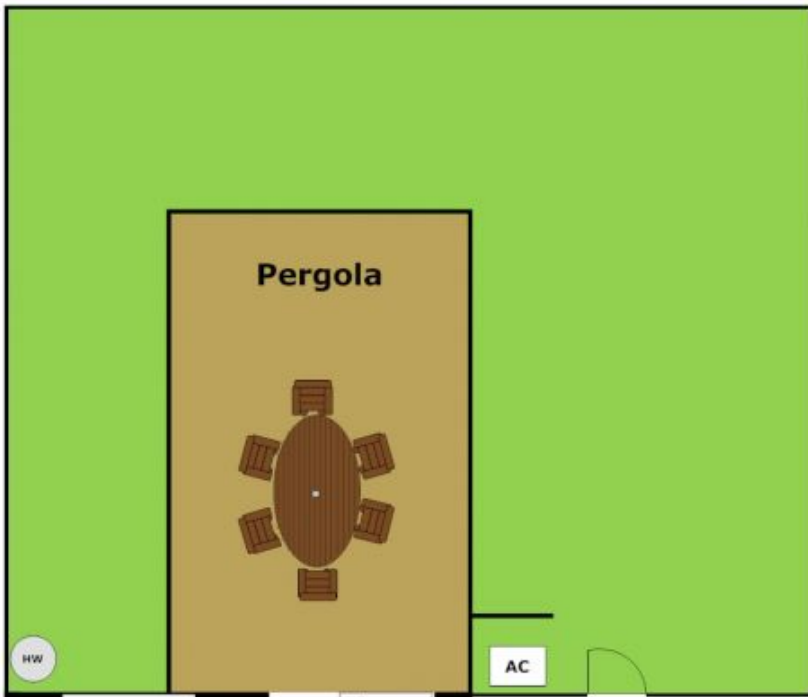
**2**  **3**  **2** 

Set in a quiet, boutique complex within enviable access to all amenities is this stylish & modern townhouse that offers you an unbeatable, low maintenance lifestyle. Boasting only one common wall and two bedrooms each with its own built-in robe & en-suite, a separate study and a third bathroom. An uncompromising commitment to quality throughout is provided with the new carpet, re-polished hardwood floorboards and excellent inclusions & features. Whilst the simple joys of good friends, relaxing moments and gourmet feasts are taken care of with the open plan lounge & dining room and large gourmet kitchen that features granite bench tops & stainless steel appliances including a gas stove. Entertaining is part of the real joy of owning this home and is enhanced by the landscaped gardens with a water feature and the Merbau timber decking that comes complete with built-in lighting & a pergola fan. Plus you can enjoy the added bonus of private

**Land Size** : 257 sqm  
**View** : <https://www.gilmour.com.au/sale/nsw/hills/baulkham-hills/residential/townhouse/5620342>

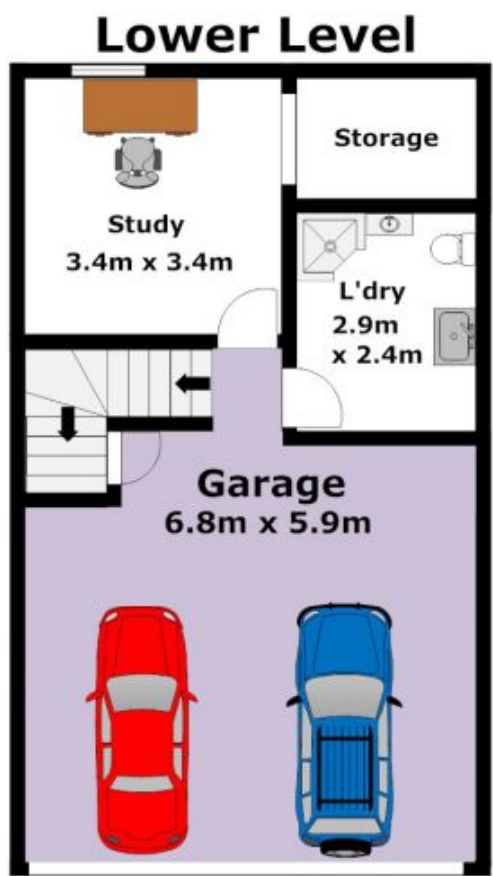
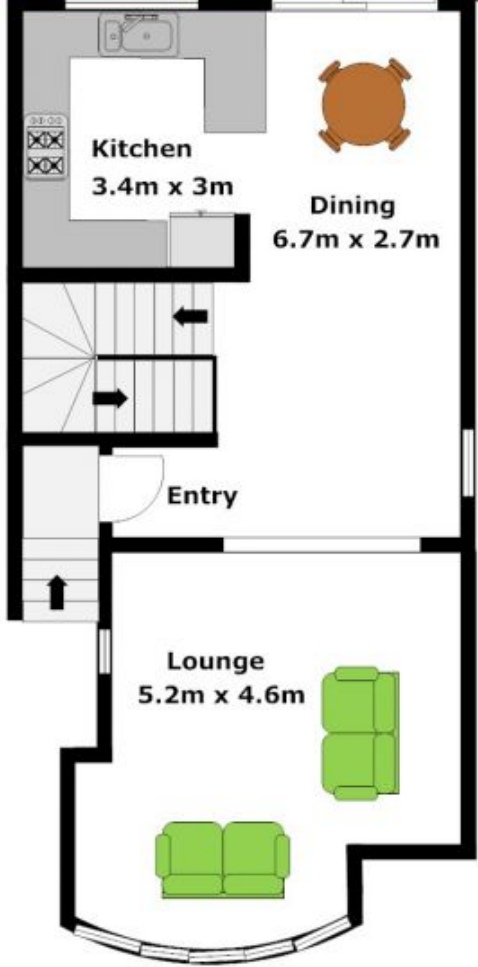


**Gilmour Property Agents**  
**02 9899 3311**



**DISCLAIMER:**

Whilst every attempt has been made to ensure the accuracy of the floor plan contained here, no responsibility is taken for any error, omission, or misstatement. This floor plan is intended as a guide only, for representation purposes only, and should be used as such by any prospective purchaser. No guarantee or warranties can be given, and any person using this information should rely on their own enquiries.



**Upper Level**

