






26 Yaringa Road CASTLE HILL NSW

5  2  2 

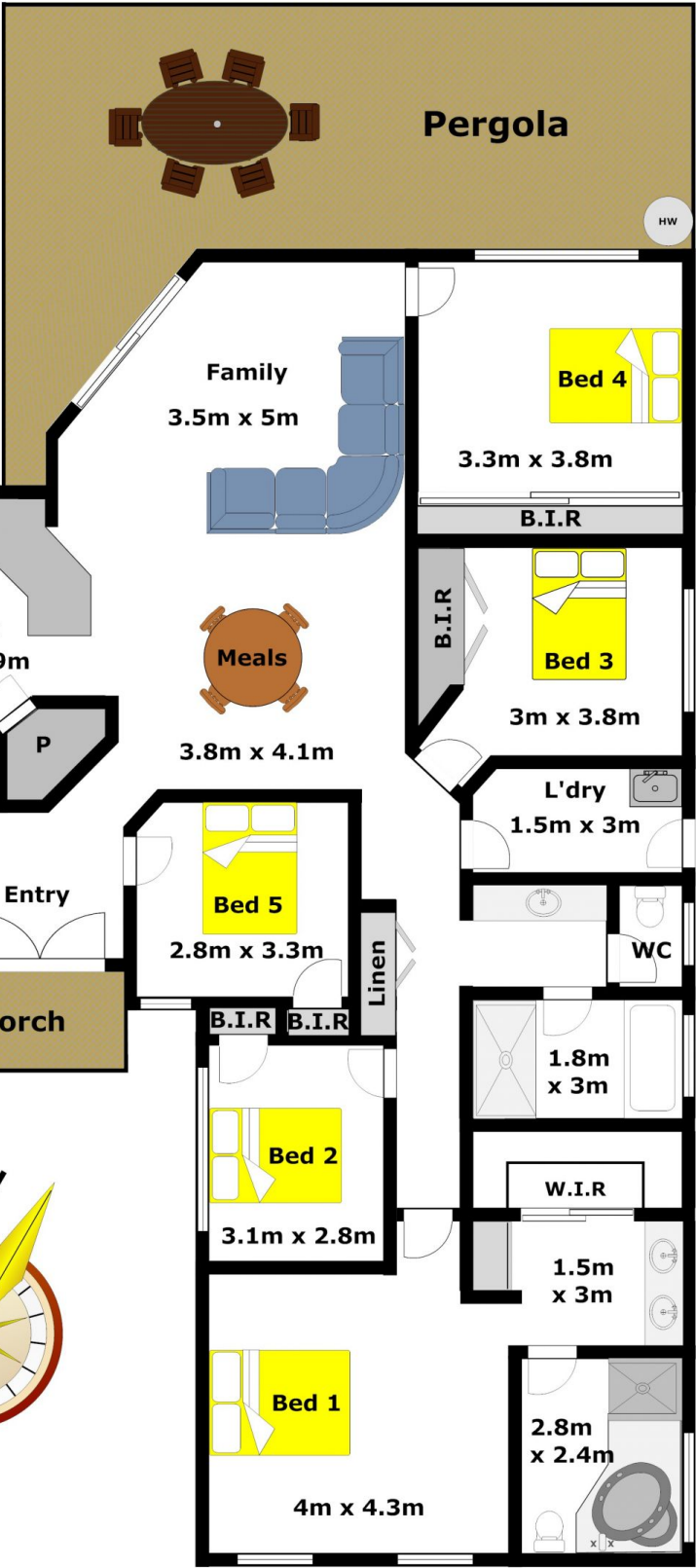
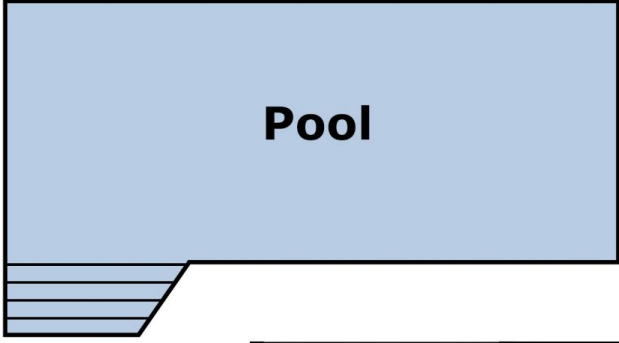
This great, single level family home sits on a lovely 793.8sqm block on the high side of a fantastic street in the Samuel Gilbert catchment. Boasting five generously proportioned bedrooms with built-in robes to each and two bathrooms including the en-suite to the master bedroom that features a spa bath & his & her sinks. The design of the home is focussed on spacious family living with the formal lounge & dining room and an open plan family/rumpus room & meals area flowing out from the expansive kitchen with new appliances. The perfect environment for alfresco entertaining is here with the covered & paved area that overlooks the sparkling, salt water pool & grassed area. With other quality inclusions such as fresh carpet & paint, fully ducted reverse air-conditioning and an automatic double lock-up garage plus plenty of off street parking. Convenient access to all amenities including Castle Towers, Knightsbridge shops,

Land Size : 793.8 sqm

View : <https://www.gilmour.com.au/sale/nsw/hills/castle-hill/residential/house/5620388>



Gilmour Property Agents
02 9899 3311



DISCLAIMER:
Whilst every attempt has been made to ensure the accuracy of the floor plan contained here, no responsibility is taken for any error, omission, or misstatement. This floor plan is intended as a guide only, for representation purposes only, and should be used as such by any prospective purchaser. No guarantee or warranties can be given, and any person using this information should rely on their own enquiries.