

14307/177-219 Mitchell Road ERSKINEVILLE NSW

1  1  1 

Extra large modern one bedroom apartment with study - 85m² - one of the biggest you'll see. Beautifully presented throughout it offers an enormous living room opening to a huge covered balcony with sunny east facing garden outlook.

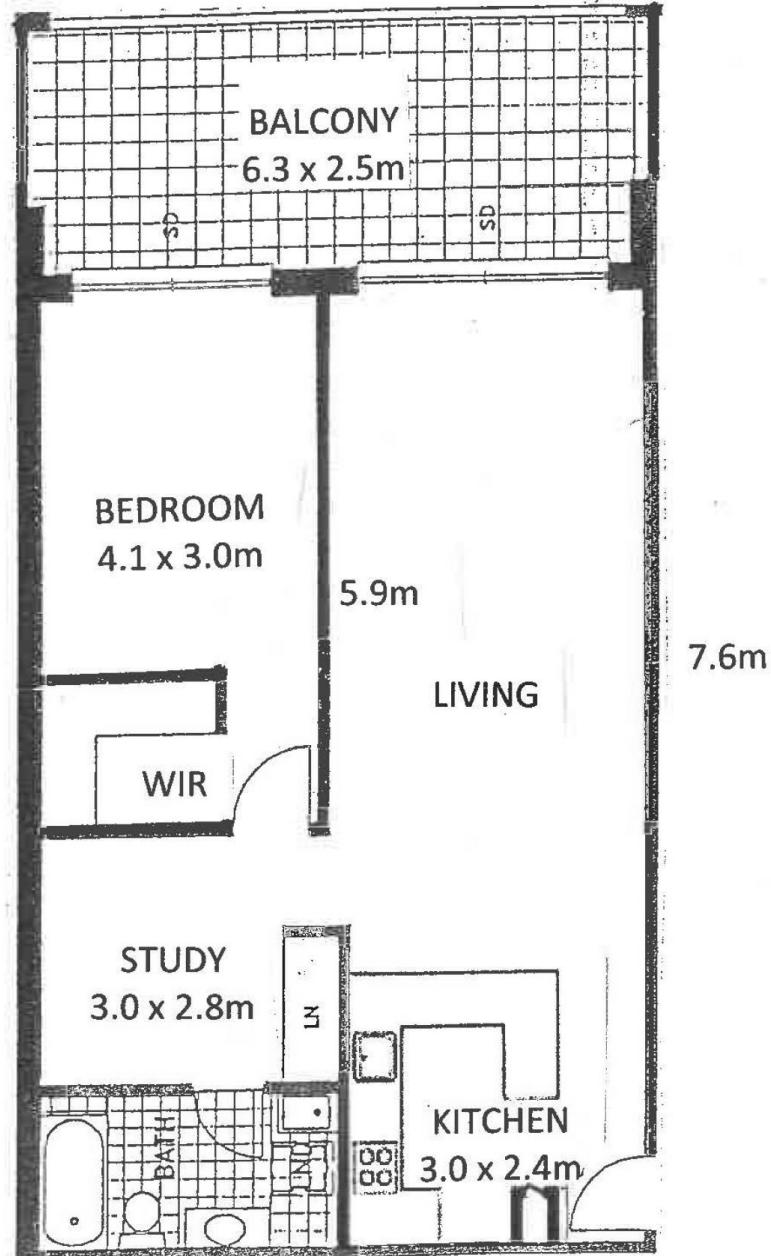
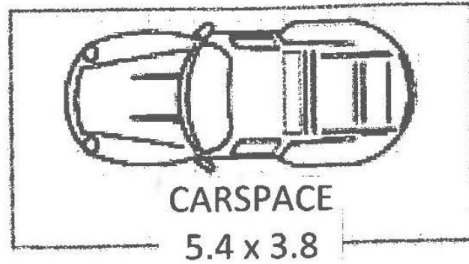
- * Full sized kitchen with stainless gas cook top & dishwasher.
- * Double bedroom with a walk-in wardrobe & sliding door balcony access.
- * Large separate study room with linen storage
- * Fully tiled modern bathroom with internal laundry.
- * Secure parking with lift access and storage cage.

Sydney Park Village is an immaculate garden complex with huge indoor & outdoor pools, full gym, tennis courts, shops and concierge security. A fantastic location - easy walking

Building Size : 9 sqm
View : <https://www.gilmour.com.au/sale/nsw/inner-west/erskineville/residential/apartment/5620424>



Gilmour Property Agents
02 9899 3311



14307/177 – 219 MITCHELL ROAD

ERSKINEVILLE