



**33/15-19 Hume Avenue CASTLE HILL NSW**

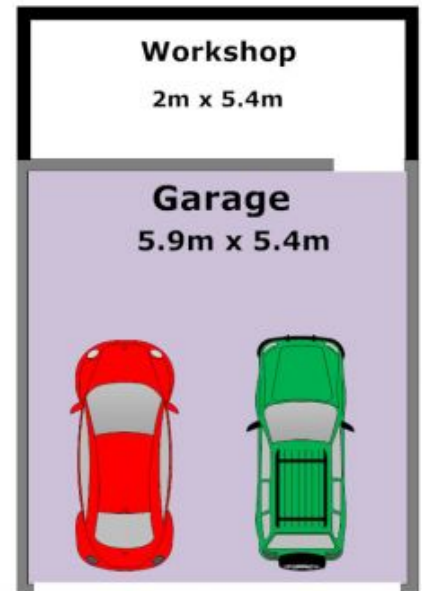
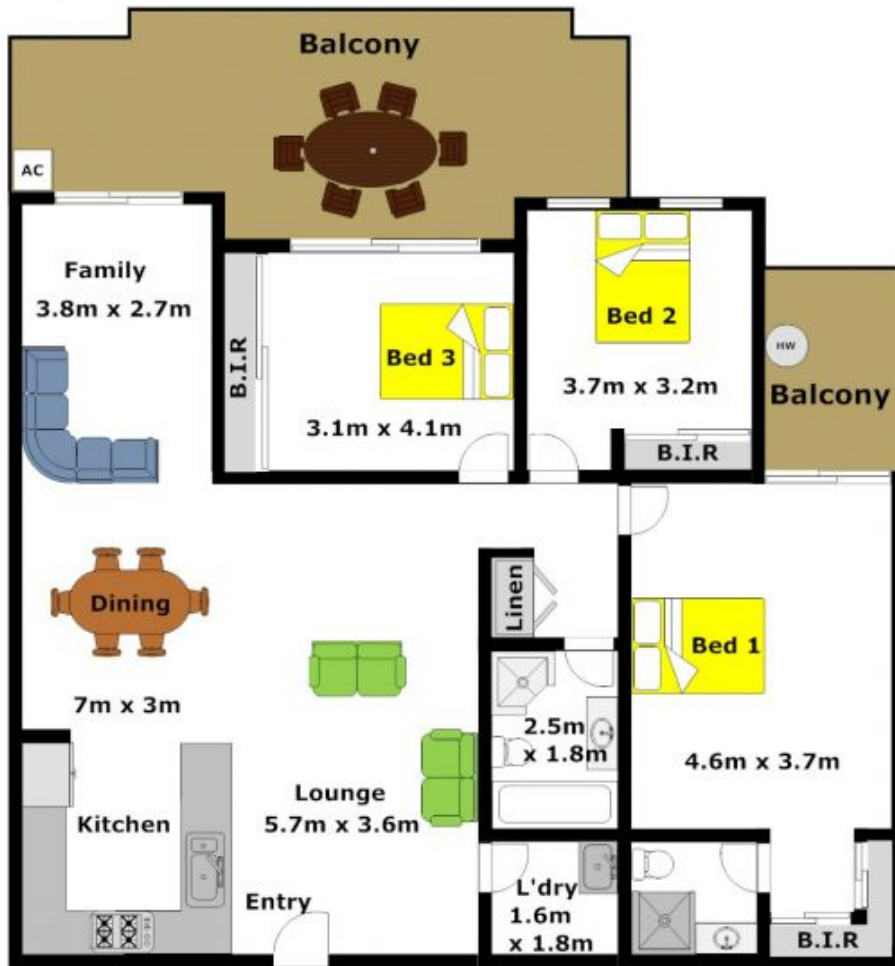
**2  2  2 **

This north facing, top floor apartment sure to impress those seeking stylish & contemporary living and is ideally positioned in a very well run complex in the heart of Castle Hill. Boasting a total of 185sqm of modern living space and featuring two huge bedrooms with built-in robes, a separate study and two bathrooms including the en-suite. Create culinary masterpieces in the gourmet polyurethane & CaesarStone kitchen with gas cooking & stainless steel appliances and the generous open living area sets the tone for the apartment's light, bright & airy ambience throughout. Flowing out from the living area is the large balcony which is ideal for entertaining and cool off in the refreshing pool within the complex if you feel like a dip. There is an oversized double lock-up garage with a storage room, air-conditioning and a second balcony off the master bedroom completes the package on offer here. Set within walking distance to Castle Towers, schools and public

**Building Size** : 20 sqm  
**View** : <https://www.gilmour.com.au/sale/nsw/hills/castle-hill/residential/unit/5620427>



**Gilmour Property Agents**  
**02 9899 3311**



**DISCLAIMER:**

Whilst every attempt has been made to ensure the accuracy of the floor plan contained here, no responsibility is taken for any error, omission, or misstatement. This floor plan is intended as a guide only, for representation purposes only, and should be used as such by any prospective purchaser. No guarantee or warranties can be given, and any person using this information should rely on their own enquiries.

