



18 Ashford Avenue CASTLE HILL NSW

4  2  2 

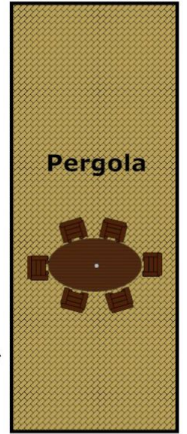
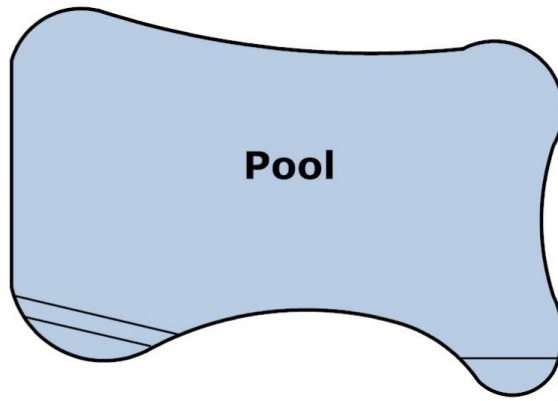
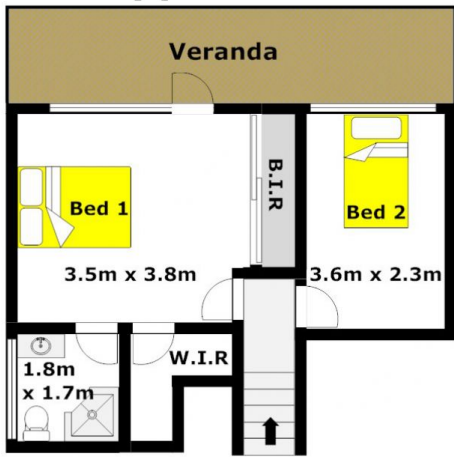
Located on a generous 929sqm block and backing a bush reserve & creek is this contemporary, split level family home. Sitting in a quiet street in a popular area of Castle Hill this home offers four generous bedrooms, and the master bedroom features a walk-in robe, an en-suite and private balcony access. Inviting & comfortable living areas consist of the lounge/rumpus room and an open plan dining/family area flowing out from the brand new kitchen that boasts glass splash backs & stainless steel appliances. The tranquil setting encourages you to sit back & relax from the large glass atrium that takes in the beautiful outlook and the sparkling in-ground pool. Whilst entertaining friends & family is made easy by the pergola & gazebo overlooking the landscaped yard. The many features of this delightful home include the double lock-up garage, raked ceilings and split system air-conditioning for temperature control. Close to all amenities including

Land Size : 929 sqm
View : <https://www.gilmour.com.au/sale/nsw/hills/castle-hill/residential/house/5620446>

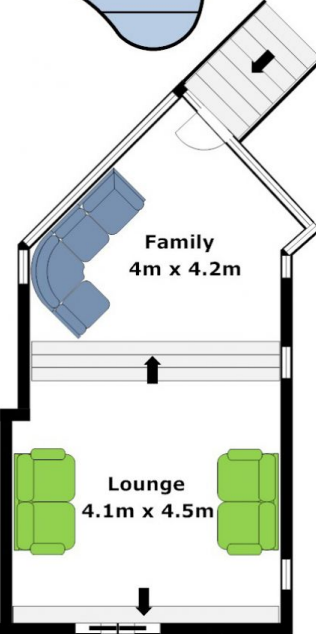
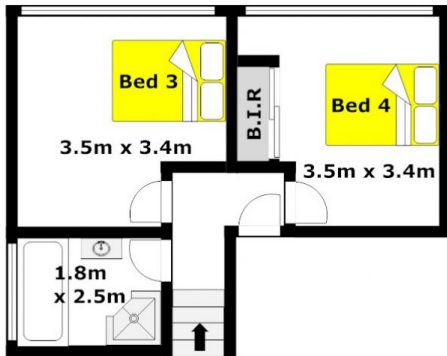


Gilmour Property Agents
02 9899 3311

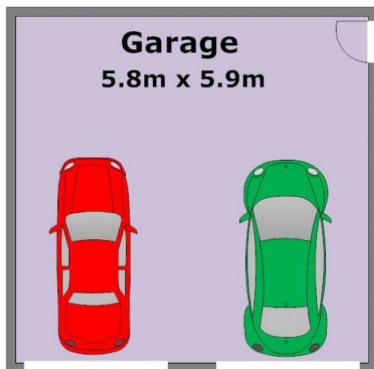
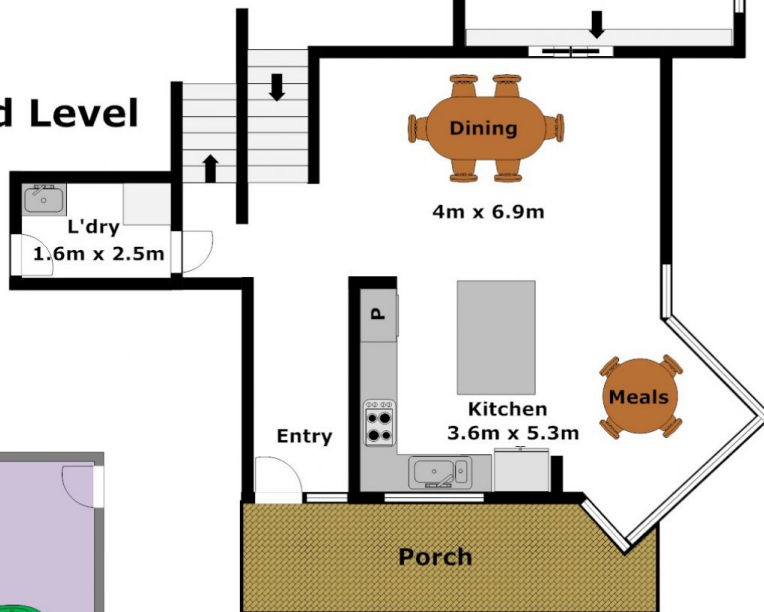
Upper Level



Lower Level



Ground Level



DISCLAIMER:

Whilst every attempt has been made to ensure the accuracy of the floor plan contained here, no responsibility is taken for any error, omission, or misstatement. This floor plan is intended as a guide only, for representation purposes only, and should be used as such by any prospective purchaser. No guarantee or warranties can be given, and any person using this information should rely on their own enquiries.