



9 Strathfillan Way KELLYVILLE NSW

5  3  2 

This striking, custom built, 3 level home is located within an enclave of prestigious homes in the sought after Duncraig estate. Set on a 601sqm and boasting five generous bedrooms, four of the bedrooms feature built-in or walk-in robes and the simply massive grand master suite is completed by vaulted ceilings, a huge en-suite, a parents retreat and an enviable walk-in robe.

The soaring foyer featuring loads of natural light & marble flooring will lead your guests to sophisticated living areas comprising of a formal lounge & dining room with a gas open fireplace, a rumpus room and a family/meals room. The opulence & quality of this home continues in the gourmet kitchen that boasts stone bench tops, gas cooking and stainless steel appliances. Continue out to the alfresco setting that encourages you to relax, enjoy or entertain with the huge covered & tiled area that overlooks the terraced

Land Size : 601 sqm
View : <https://www.gilmour.com.au/sale/nsw/hills/kellyville/residential/house/5620481>

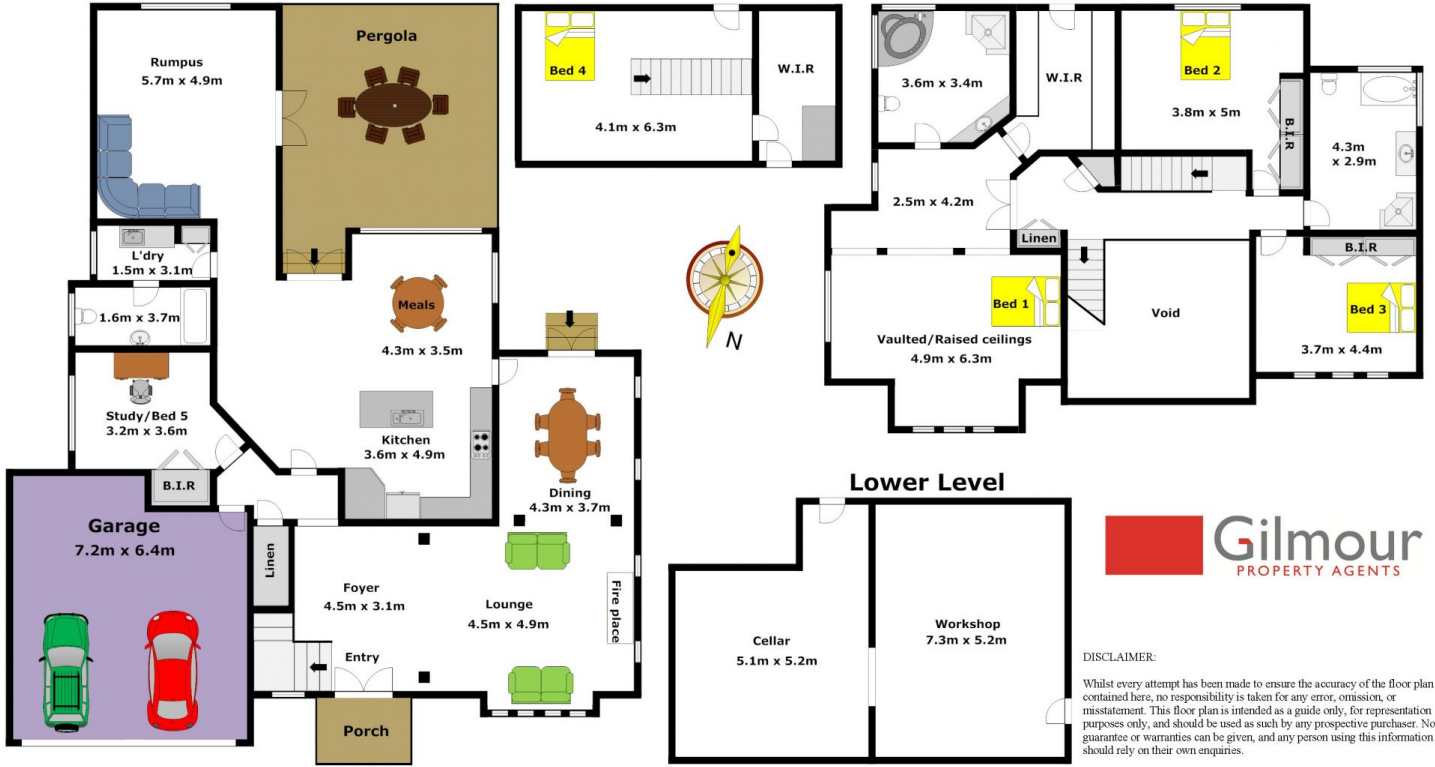


Gilmour Property Agents
02 9899 3311

Ground Level

2nd Level

1st Level



DISCLAIMER:

Whilst every attempt has been made to ensure the accuracy of the floor plan contained here, no responsibility is taken for any error, omission, or misstatement. This floor plan is intended as a guide only, for representation purposes only, and should be used as such by any prospective purchaser. No guarantee or warranties can be given, and any person using this information should rely on their own enquiries.