



10 Dawn Drive SEVEN HILLS NSW

3  1  1 

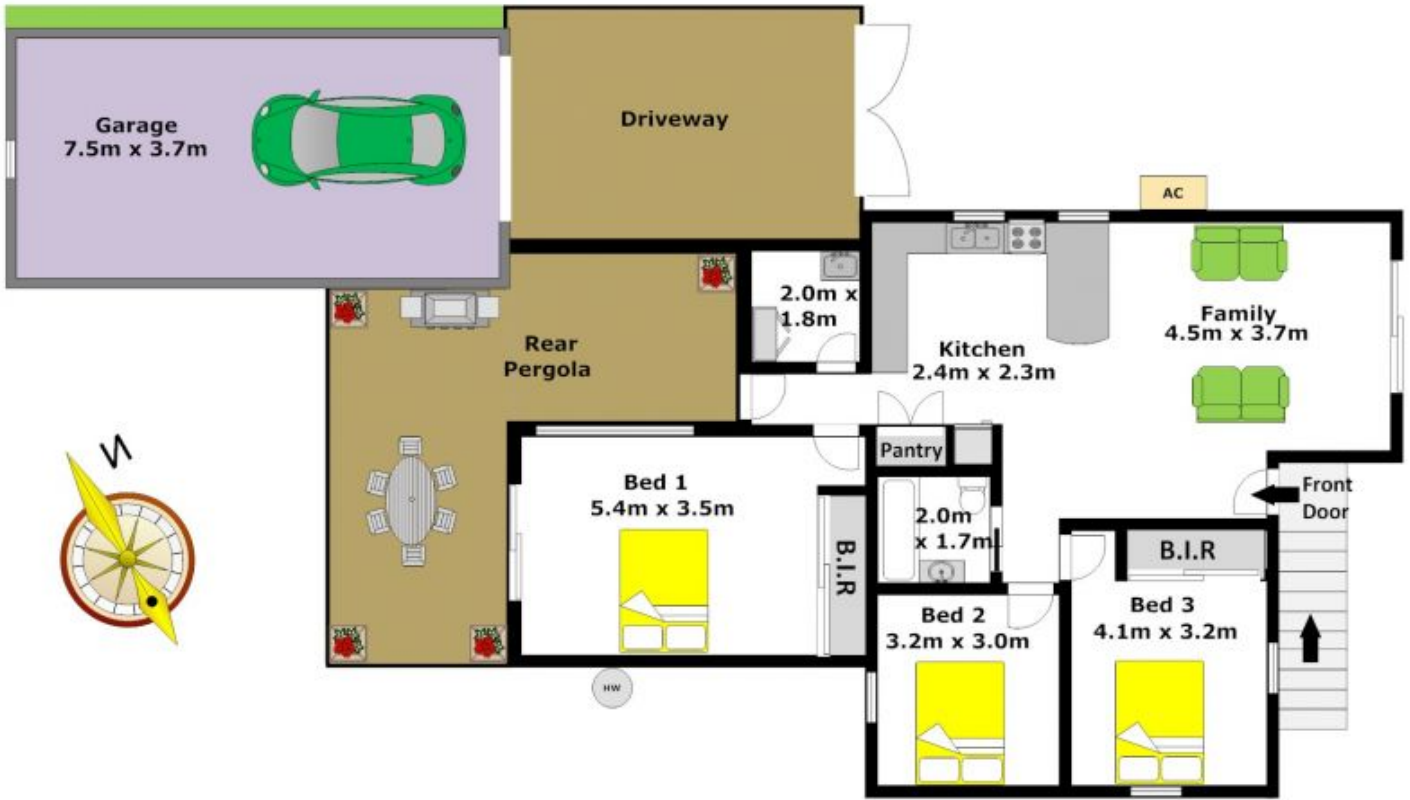
Priced to sell is this great family home on a 651sqm block that boasts a 15m frontage and is an ideal first home or for an investment portfolio. Set on the high side of a quiet, tree lined street on a regular shaped 651sqm block and featuring three bedrooms and a main bathroom. High ceilings throughout & timber flooring compliment the open plan family/meals area and the contemporary, updated kitchen with a breakfast bars also features a mains gas connection. Continue out to the generous rear grassed yard which is overlooked by a covered entertaining area that is a lovely setting for hosting family & friends. Also on offer here is the 1.5kw solar panels on the roof, gas heating outlet, air-conditioning unit, an oversized lock-up garage and potential R3 zoning. Close to all amenities including parks, reserves, schools and within approximate walking distance to Blacktown station, Westpoint Shopping Centre and the T- Way bus service. This must be sold, don't let it

Land Size : 651.3 sqm

View : <https://www.gilmour.com.au/sale/nsw/western-sydney/seven-hills/residential/house/5620509>



Gilmour Property Agents
02 9899 3311



DISCLAIMER:

Whilst every attempt has been made to ensure the accuracy of the floor plan contained here, no responsibility is taken for any error, omission, or misstatement. This floor plan is intended as a guide only, for representation purposes only, and should be used as such by any prospective purchaser. No guarantee or warranties can be given, and any person using this information should rely on their own enquiries.

