

32 Witonga Crescent BAULKHAM HILLS NSW

4 3 3

Nestled in a whisper quiet tree lined street in sought after North Baulkham Hills, this home is nothing short of impeccable. Situated on a large 740sqm block in a coveted high side position, it also benefits from dual street access.

- Presented in pristine condition both inside and out, there is ample space for the whole family. There are four bedrooms and three bathrooms as well as an upstairs teenagers retreat and a home office/study. Light and bright throughout, this home exudes a welcoming warmth and features formal lounge and dining areas, three split system air conditioners and a family room at the rear of the home that flows seamlessly to the outdoors.

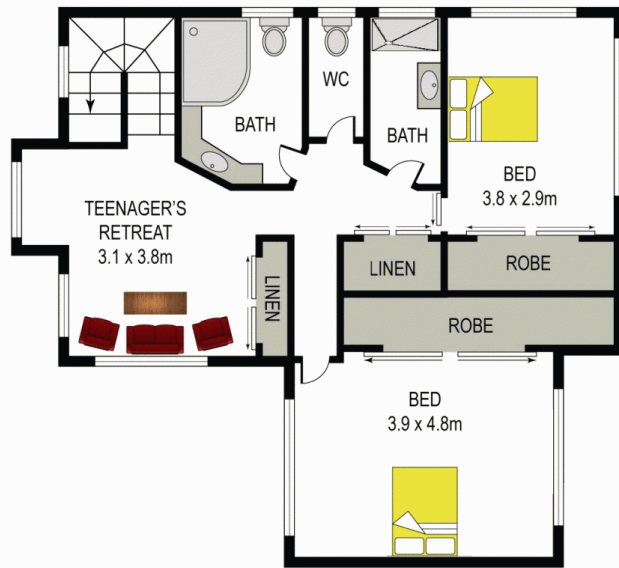
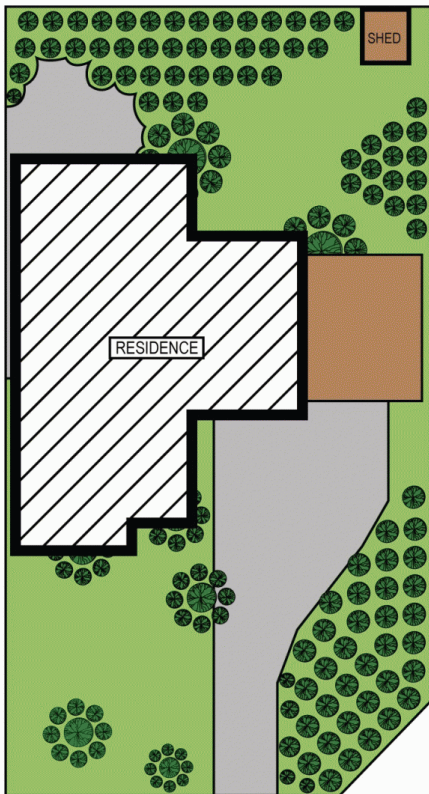
- The paved entertainment area comes complete with a BBQ, framed by leafy well established trees that overlook the level, fully fenced rear yard. Car accommodation includes a single lock up garage plus a 2.5 car undercover parking area. Lovingly maintained gardens and immaculate

Land Size : 740 sqm

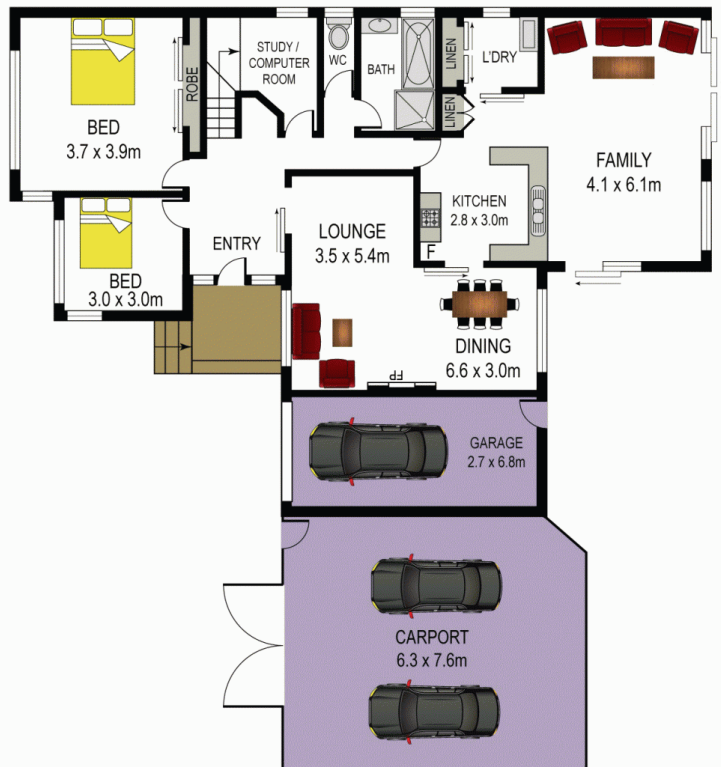
View : <https://www.gilmour.com.au/sale/nsw/hills/baulkham-hills/residential/house/5620655>



Gilmour Property Agents
02 9899 3311



FIRST FLOOR



GROUND FLOOR

32 Witonga Crescent, Baulkham Hills

DISCLAIMER
DIMENSIONS ARE APPROXIMATE AND SHOULD ONLY BE USED AS A GUIDE
THEY ARE NOT TO SCALE AND NO LIABILITY WILL BE ACCEPTED.