



## 29 Bellenden Place DURAL NSW

4 2 2

Opposite a quiet reserve and boasting a high side position in the cul-de-sac, resides this immaculate family home. Zoned for Dural Public School and Galston High School, this is ideal for families of all ages.

- Four generous sized bedrooms plus study, the spacious master bedroom has an ensuite. The main bathroom is finished with stylish fittings, plus there is a third toilet downstairs. The kitchen has ample storage space and features quality appliances, including a dual draw dishwasher.

- Exiting through the meals and family rooms to the paved, covered, outdoor entertaining area. Relax in the north facing backyard, shaded by established, low maintenance gardens.

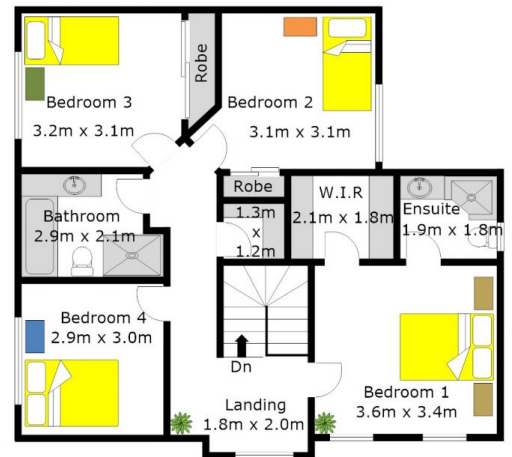
- Split system air conditioning, a double lock-up garage, and the private outlook complete this perfect package.

**Land Size** : 549.5 sqm

**View** : <https://www.gilmour.com.au/sale/nsw/hills/dural/residential/house/5620708>



**Gilmour Property Agents**  
**02 9899 3311**



**DISCLAIMER:**

Whilst every attempt has been made to ensure the accuracy of the floor plan contained here, no responsibility is taken for any error, omission, or mis-statement. This floor plan is intended as a guide only, for representation purposes only, and should be used as such by any prospective purchaser. No guarantee or warranties can be given, and any person using this information should rely on their own enquires.

Floor plan constructed by: [jasonattardphotography.com.au](http://jasonattardphotography.com.au)

