



37A Model Farms Road WINSTON HILLS NSW

5 🏠 4 🚗 2 🚗

This impressive European style full brick home is for sale for the first time and includes five oversized bedrooms with four and a half bathrooms including the large main bathroom with sauna.

Land Size : 708 sqm
View : <https://www.gilmour.com.au/sale/nsw/hills/winston-hills/residential/house/5620725>

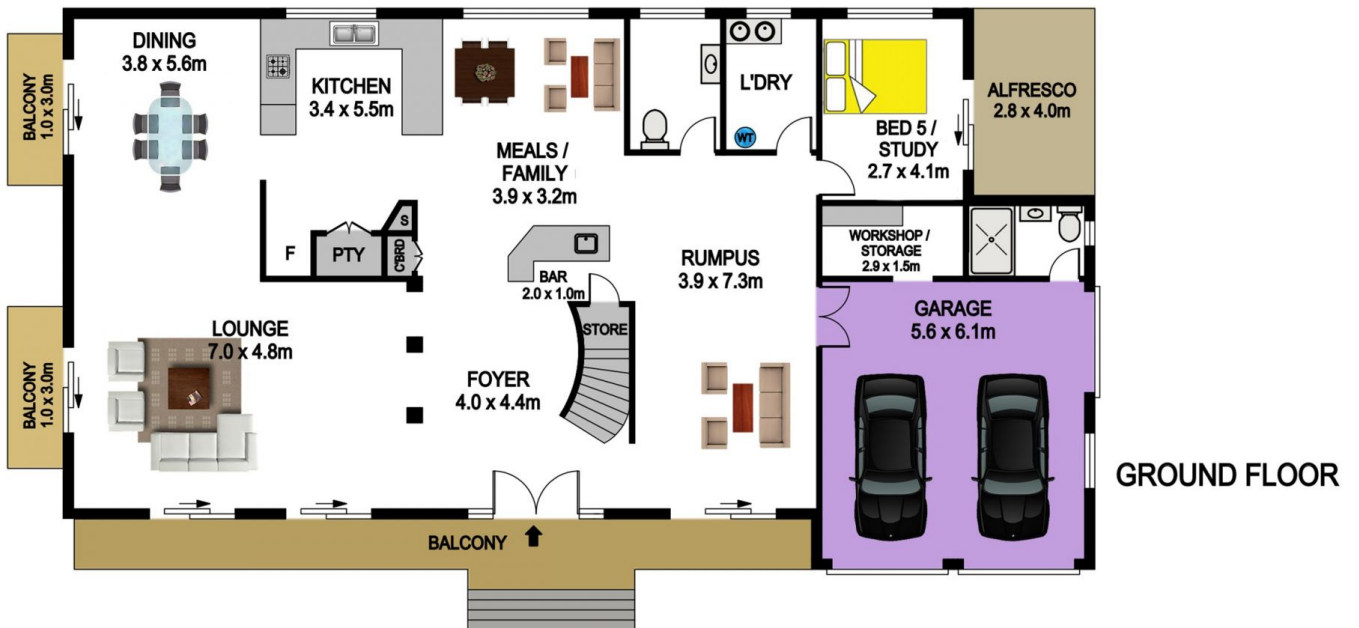
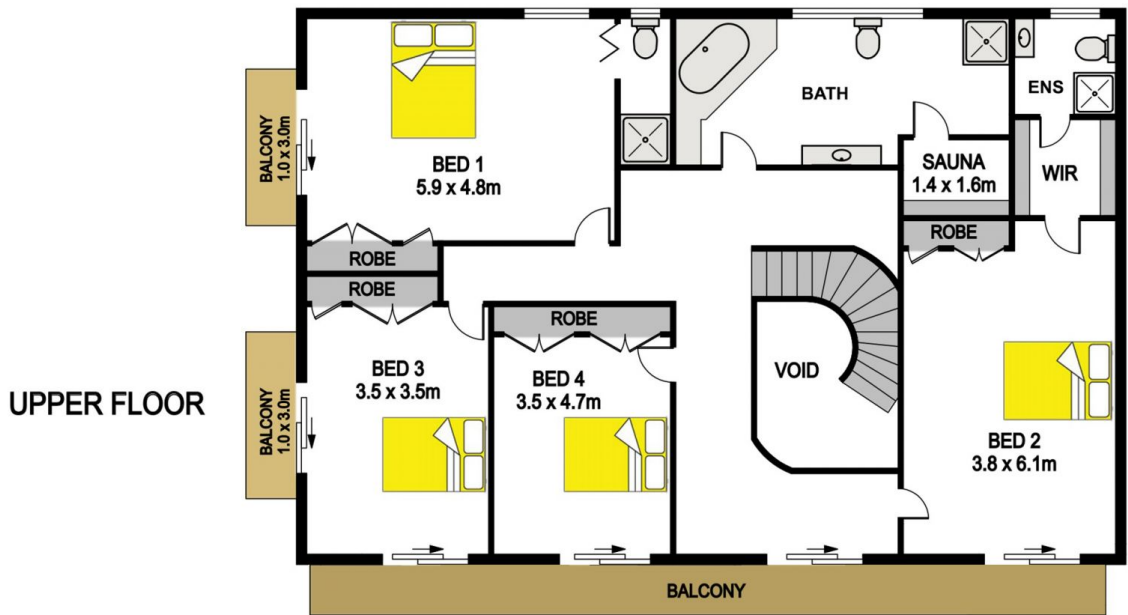
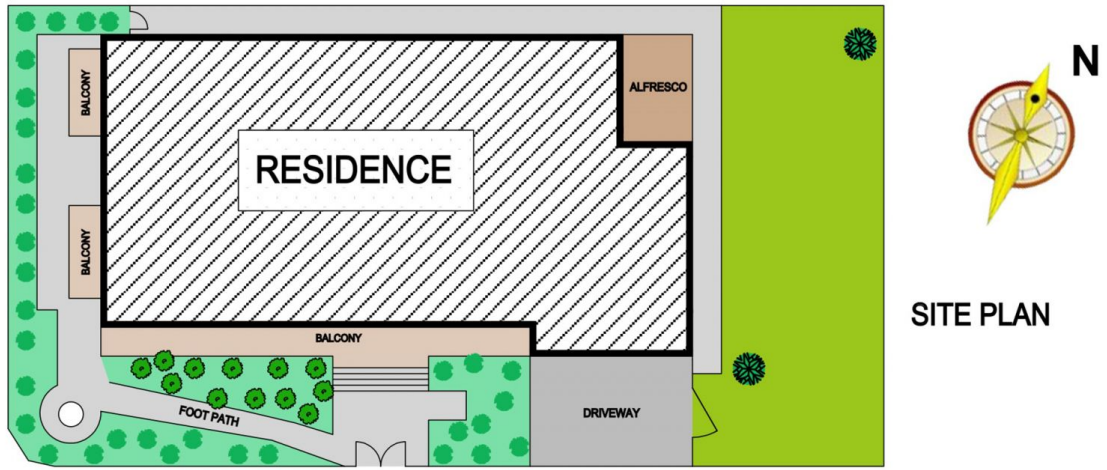
- Grand open foyer with marble and solid timber sweeping staircase leading to the upper level with suspended concrete flooring and spectacular views.

- Three upper floor bedrooms open onto a full length balcony at the front of the home with views toward Parramatta plus there are four other private balconies.

- Two bedrooms with ensuite bathrooms and a guest bedroom or study on the ground floor.



Gilmour Property Agents
02 9899 3311



37A MODEL FARMS ROAD, WINSTON HILLS

DISCLAIMER

PLANS SHOWN ARE FOR MARKETING PURPOSES ONLY, ALL DIMENSIONS ARE APPROXIMATE AND NOT TO SCALE. THEY ARE SUBJECT TO ERRORS AND INACCURACIES AND NO LIABILITY WILL BE ACCEPTED. INTERESTED PARTIES SHOULD MAKE THEIR OWN INQUIRES.

