



12/40-42 Cecil Avenue CASTLE HILL NSW

3  2  2 

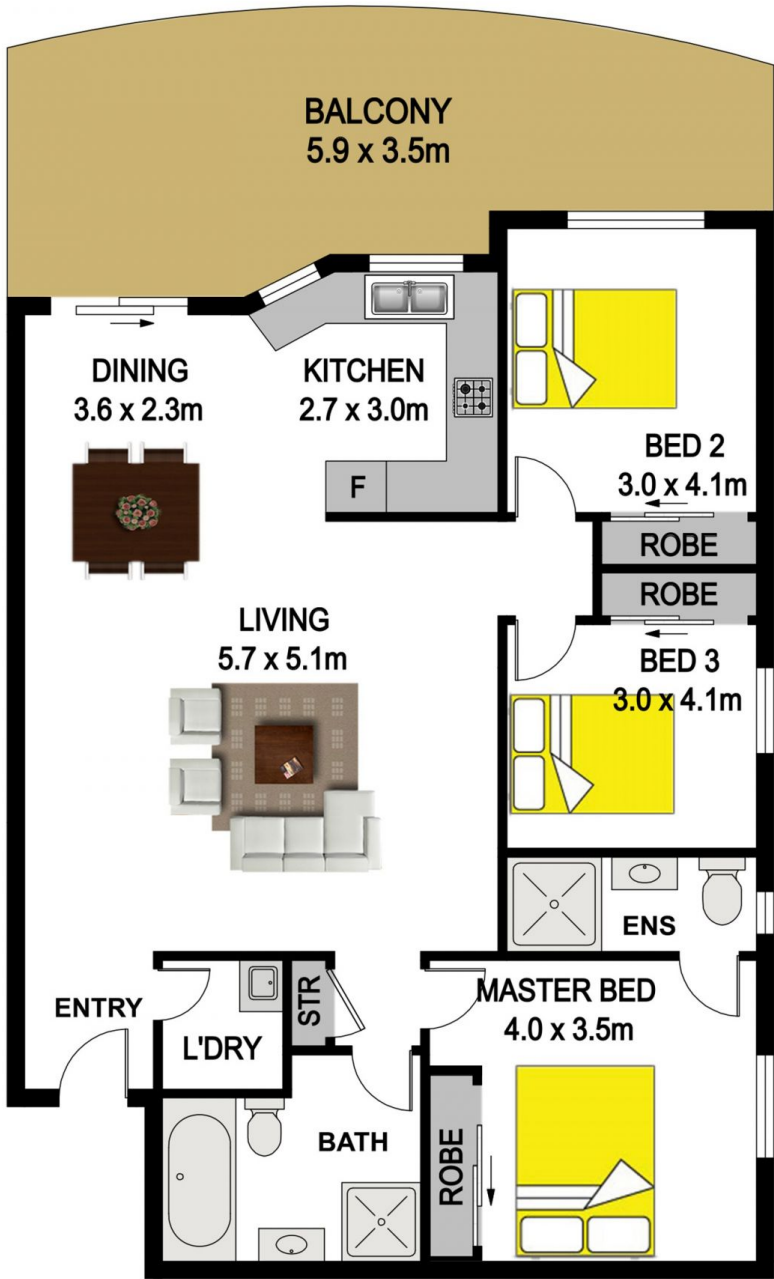
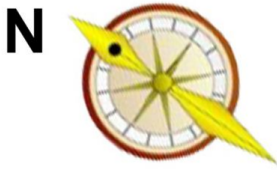
Located on the second floor of The Heritage on Cecil Avenue this apartment allows you to walk to everything - shops, transport, schools and amenities.

- Containing three bedrooms with built-ins and modern carpet, the apartment is approximately 143m² and includes two bathrooms.
- Air conditioned and tiled open plan living adjacent to the kitchen with stone bench tops and gas cooking.
- The balcony is north facing and great for entertaining and the complex also has a pool to enjoy.
- There is a double lock up secure garage and intercom.
- Walking distance to Castle Towers Shopping Centre, Castle Hill Public and high school, bus stops and the new Castle Hill Train Station, this apartment located at the rear of the complex provides for an easy life.

Building Size : 15 sqm
View : <https://www.gilmour.com.au/sale/nsw/hills/castle-hill/residential/apartment/5620727>



Gilmour Property Agents
02 9899 3311



12/40-42 CECIL AVENUE, CASTELE HILL

DISCLAIMER

PLANS SHOWN ARE FOR MARKETING PURPOSES ONLY, ALL DIMENSIONS ARE APPROXIMATE AND NOT TO SCALE. THEY ARE SUBJECT TO ERRORS AND INACCURACIES AND NO LIABILITY WILL BE ACCEPTED. INTERESTED PARTIES SHOULD MAKE THEIR OWN INQUIRES.