



**23 Carinyah Crescent CASTLE HILL NSW**

4 2 2

This much loved double storey home with leafy scenic outlook from all angles offers four bedrooms including two bathrooms with potential in-law accommodation.

**Land Size** : 822 sqm  
**View** : <https://www.gilmour.com.au/sale/nsw/hills/castle-hill/residential/house/5620746>

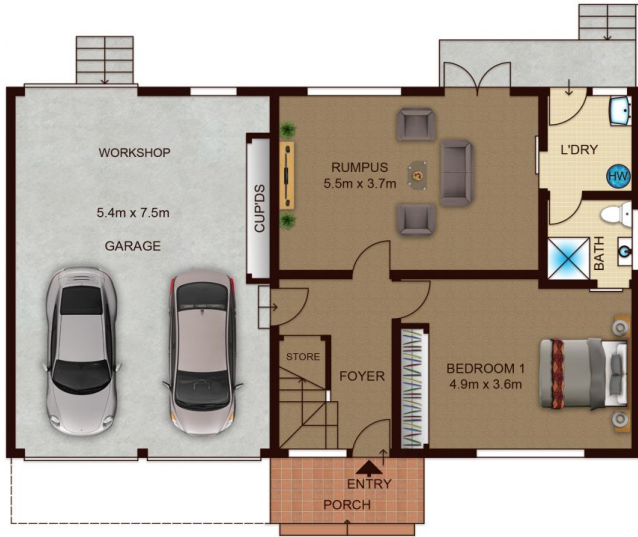
Clean and tidy Kitchen with breakfast area and spacious dining and lounge opening out to the inviting balcony.

Other features include separate rumpus, split system air conditioning and oversized double lock-up garage with drive thru access to the massive open rear yard.

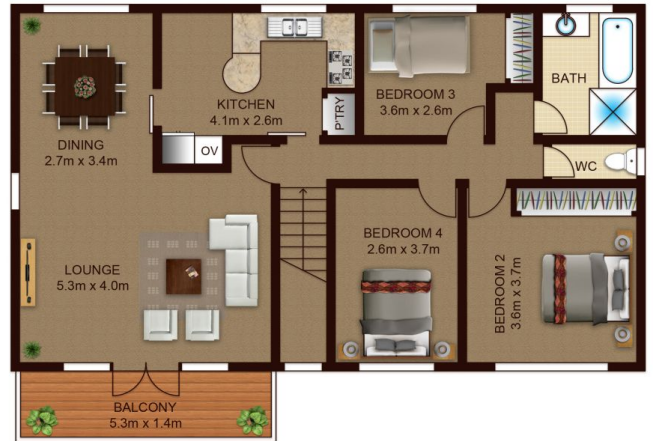


Perfectly located with the high school and park at your door step. Walk to shops, transport and Castle Hill RSL.

**Gilmour Property Agents**  
**02 9899 3311**



**GROUND FLOOR**



**FIRST FLOOR**

