



4 Talofa Place CASTLE HILL NSW

5 🛏 2 🚿 3 🚗

This beautifully appointed architecturally designed Balmoral Home is magnificently set on the high side of a quiet residential cul-de-sac within minutes to Castle Hill Town Centre and upcoming train station.

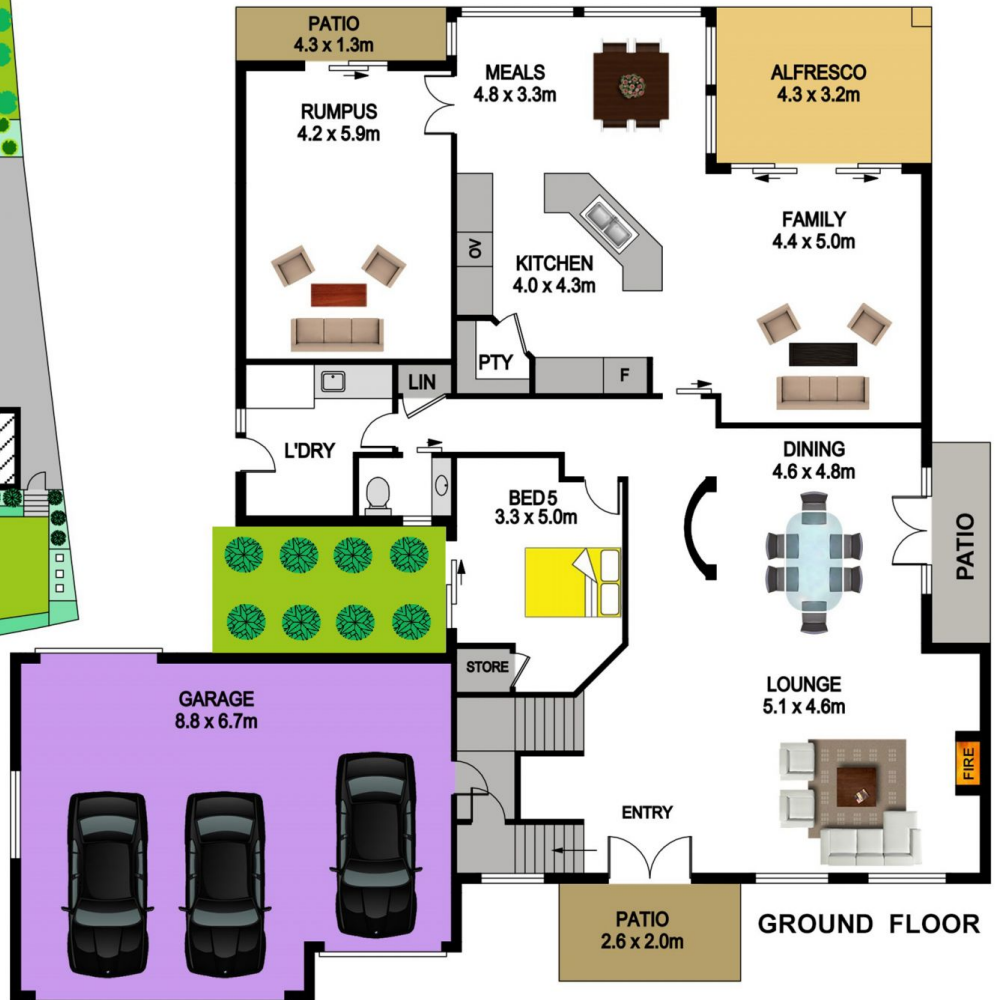
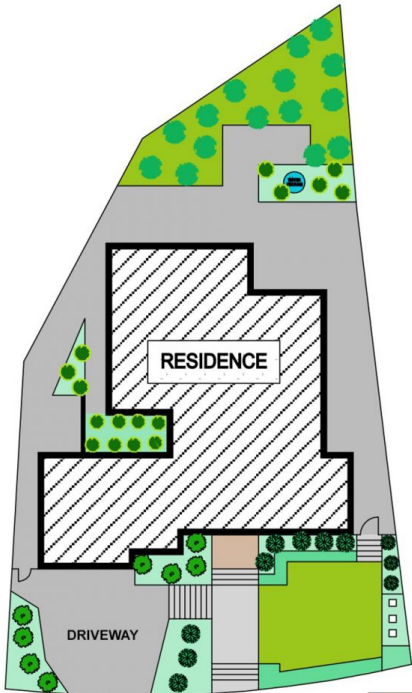
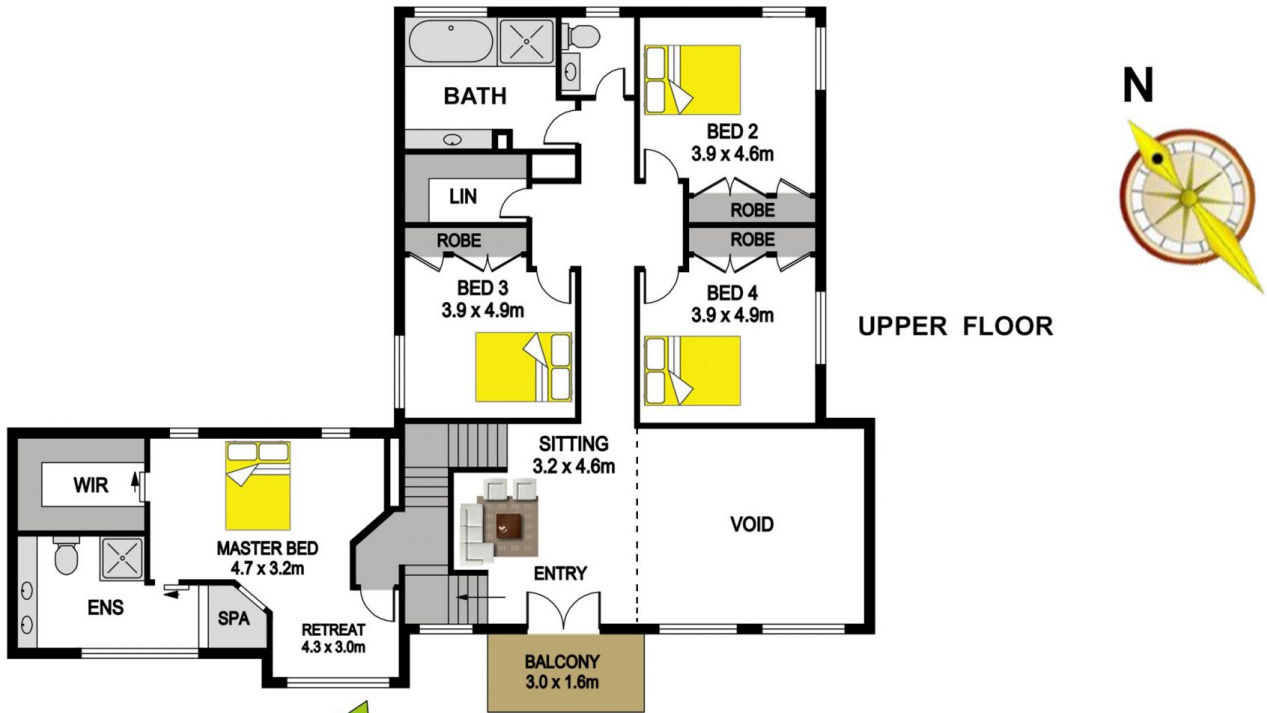
Land Size : 728.9 sqm

View : <https://www.gilmour.com.au/sale/nsw/hills/castle-hill/residential/house/5620748>

- Four double sized bedrooms with oversized built-ins and study or fifth bedroom with its own private courtyard. The master bedroom is exclusively located on the second level with walk-in wardrobe and ensuite with spa bath. Each of the bathrooms have been deliberately designed with Honed Crema Marfil Marble benchtops and travertine floor tiles.
- From the moment you enter the home you will be impressed by the sunken lounge room with 4.4 metre ceiling rising to 6.2 metres cathedral ceiling, cosy gas Crema Marfil Marble fireplace and plantation shutters adjoining the elevated spacious dining room.
- The gourmet kitchen built by Emanuel Kitchens is



Gilmour Property Agents
02 9899 3311



4 TALOFA PLACE, CASTLE HILL

DISCLAIMER

PLANS SHOWN ARE FOR MARKETING PURPOSES ONLY, ALL DIMENSIONS ARE APPROXIMATE AND NOT TO SCALE. THEY ARE SUBJECT TO ERRORS AND INACCURACIES AND NO LIABILITY WILL BE ACCEPTED. INTERESTED PARTIES SHOULD MAKE THEIR OWN INQUIRES.