



**19 Chelsea Road CASTLE HILL NSW**

4 3 2

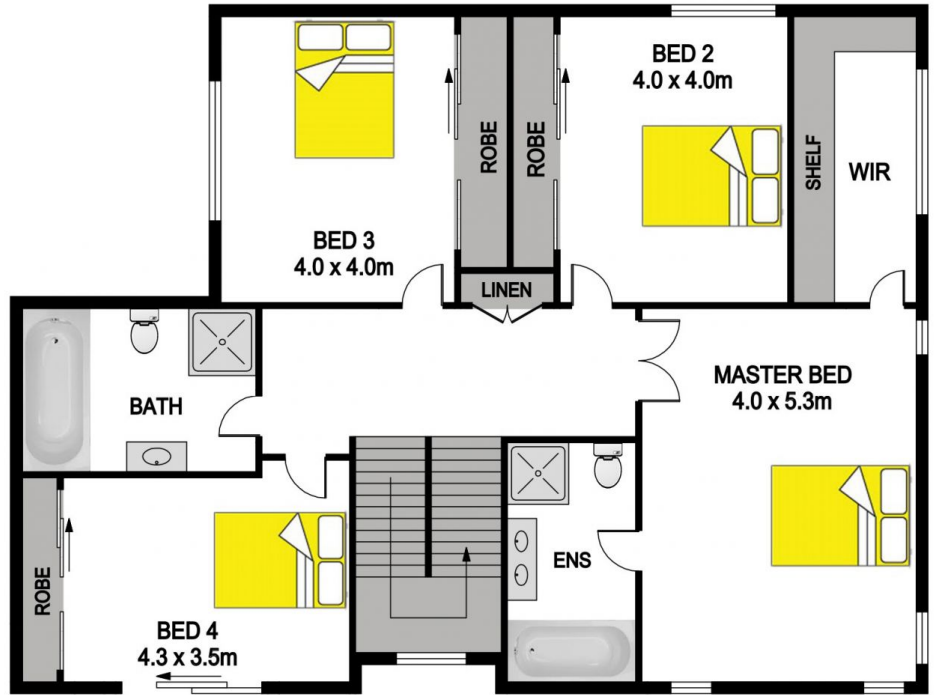
This inviting modern home offers space and comfort whilst enjoying a low maintenance yard and convenience to shops, schools, bus and the new train station.

- Four generous bedrooms with built-ins including the main bedroom with huge walk-in-robe and ensuite with its own bath.
- Neutrally toned throughout with a formal lounge and dining room and huge tiled family room offering great living space.
- The ultra-modern polyurethane kitchen has Caesarstone benches, ample storage, gas cooking and stainless steel appliances with ducted range hood.
- Two magnificently appointed bathrooms and additional toilet downstairs plus good sized laundry.
- Double lock-up garage with internal access and perfect sunny north aspect to the paved entertaining area and

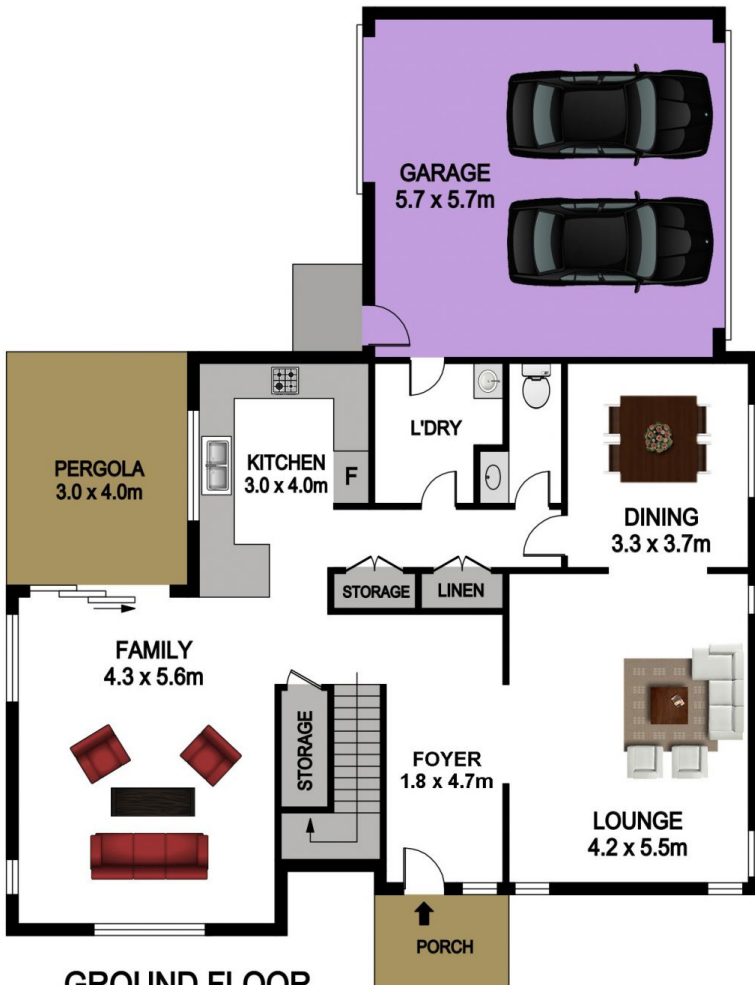
**Land Size** : 487.9 sqm  
**View** : <https://www.gilmour.com.au/sale/nsw/hills/castle-hill/residential/house/5620751>



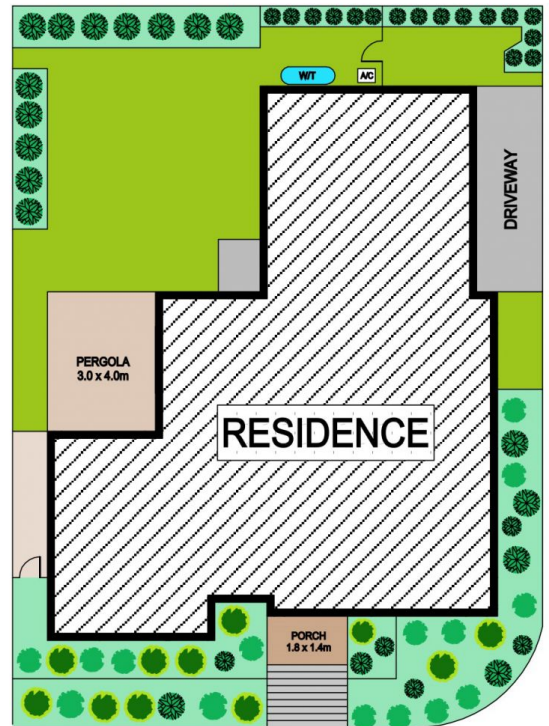
**Craig Alexis**  
**02 9899 3311**



FIRST FLOOR



GROUND FLOOR



SITE PLAN

# 19 CHELSEA ROAD, CASTLE HILL

**DISCLAIMER**

PLANS SHOWN ARE FOR MARKETING PURPOSES ONLY, ALL DIMENSIONS ARE APPROXIMATE AND NOT TO SCALE. THEY ARE SUBJECT TO ERRORS AND INACCURACIES AND NO LIABILITY WILL BE ACCEPTED. INTERESTED PARTIES SHOULD MAKE THEIR OWN INQUIRES.

