



4 Morrisey Way ROUSE HILL NSW

4  2  4 

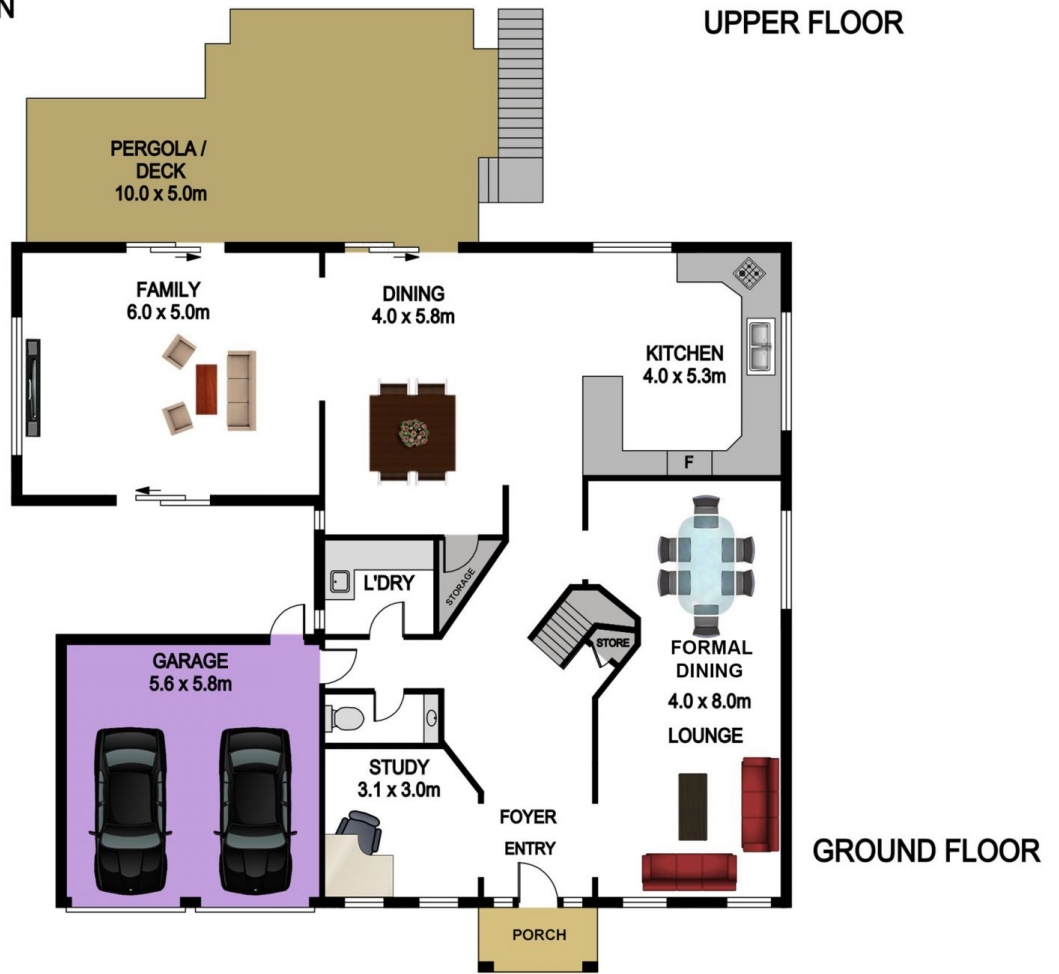
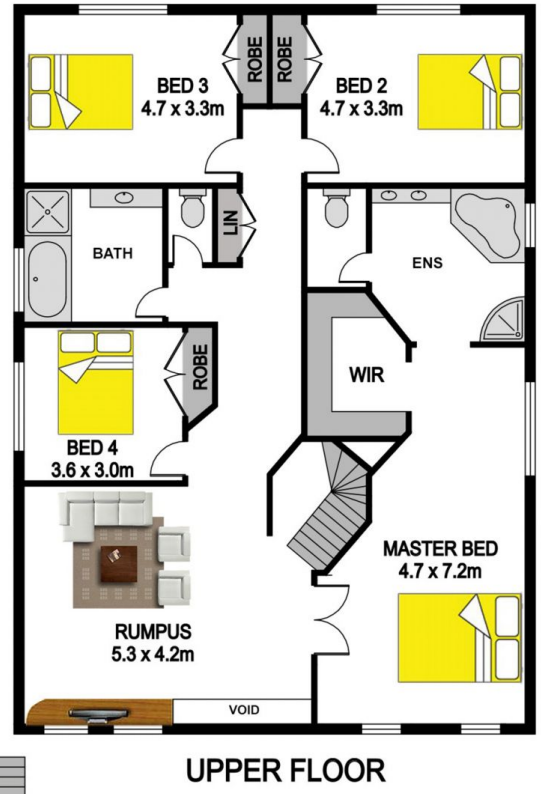
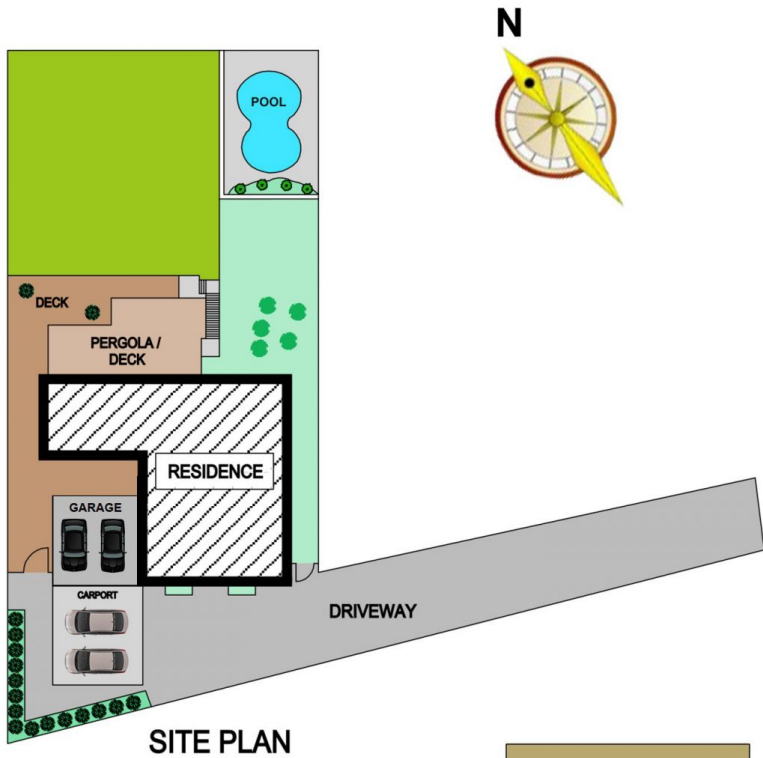
This impressive home is perfectly positioned on a terrific 858sqm block backing on to Caddies Creek bushland.

- There are four generous bedrooms all with ceiling fans and built-ins including the master bedroom with an enormous walk-in robe, ensuite, and sitting nook.
- Three spacious living areas comprising a formal lounge and dining area, huge tiled meals and separate rumpus family room as well as an upstairs TV area or teenagers retreat.
- The stylish kitchen is generously proportioned and features gas cooking, elegant finishes and feature timber breakfast bar.
- The rear yard is an extension of the enjoyment and includes large covered deck with commanding bush views, level grassed yard with salt water in-ground pool.
- Parking consists of an automatic double lock-up garage

Land Size : 858 sqm
View : <https://www.gilmour.com.au/sale/nsw/hills/rouse-hill/residential/house/5620752>



Gilmour Property Agents
02 9899 3311



4 MORRISEY WAY, ROUSE HILL

DISCLAIMER

PLANS SHOWN ARE FOR MARKETING PURPOSES ONLY, ALL DIMENSIONS ARE APPROXIMATE AND NOT TO SCALE. THEY ARE SUBJECT TO ERRORS AND INACCURACIES AND NO LIABILITY WILL BE ACCEPTED. INTERESTED PARTIES SHOULD MAKE THEIR OWN INQUIRIES.

