



31 Mapleton Avenue KELLYVILLE NSW

4 🚗 3 🚗 2 🚗

In immaculate condition, this modern family home presents a truly exceptional standard of living. Quality design by Metricon maximises space and natural light, creating bright and welcoming interiors.

- Open-plan living areas are child-friendly and spacious; with a separate dining room, kids' playroom, lounge room and upstairs rumpus. The enormous main living room opens via bi-fold doors to an alfresco entertaining area and private backyard for the kids.

- Four bedrooms offer ample space for the whole family; each containing built-in robes and large windows. The immense master bedroom features a private balcony, walk-in robe and full ensuite with dual vanities and double showerhead.

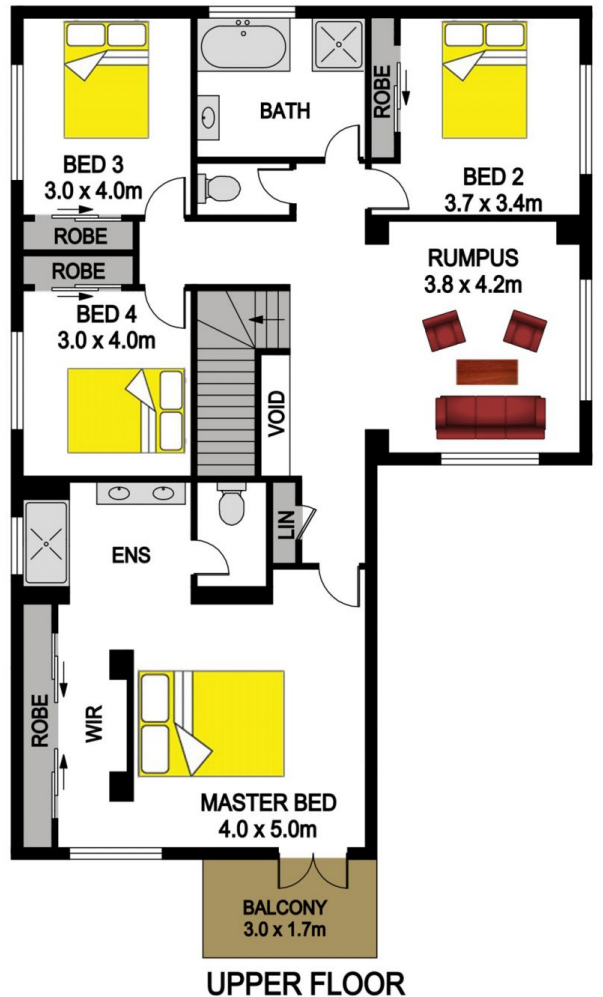
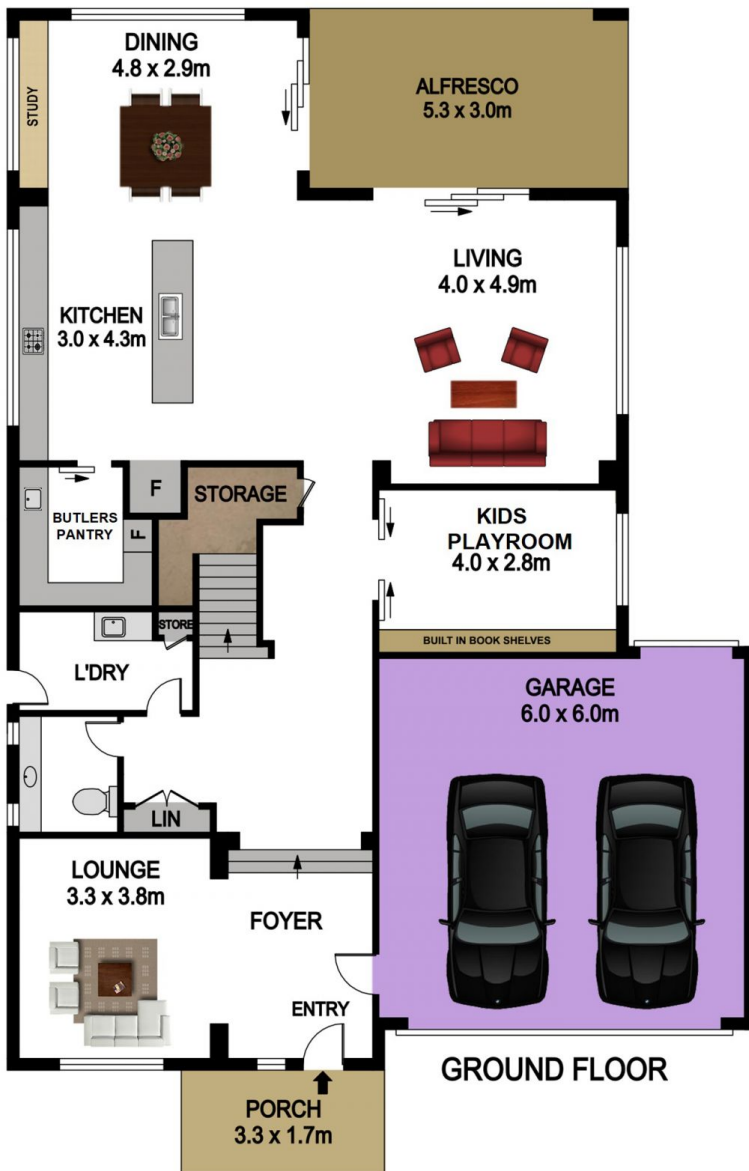
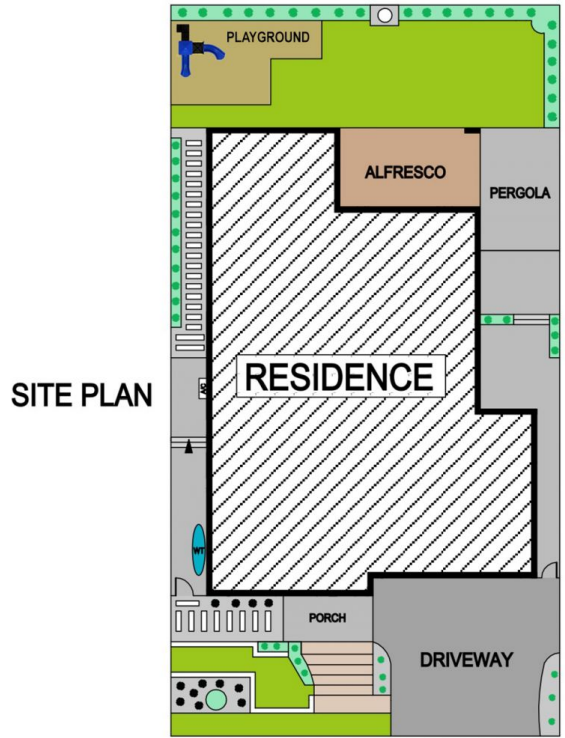
- Large kitchen with island bench, Caesarstone surfaces and pendant feature lights. It's easy to cook up a storm with a double oven, gas cooktop, and butler's pantry complete

Land Size : 480 sqm

View : <https://www.gilmour.com.au/sale/nsw/hills/kellyville/residential/house/5620766>



Gilmour Property Agents
02 9899 3311



31 MAPLETON AVENUE, KELLYVILLE

DISCLAIMER

All information contained herein is gathered from sources we consider to be reliable, however we cannot guarantee or give any warranty to the information provided.