






13 Nottingham Avenue CASTLE HILL NSW

4  3  3 

Set back from the road on an enormous regular shaped 1,024sqm block, is this fantastic family home. It is peacefully located within close proximity to all amenities, including Castle Towers and the upcoming Showground Road train station, while within walking distance to city express bus stops, Castle Hill Public School and Castle Hill High School.

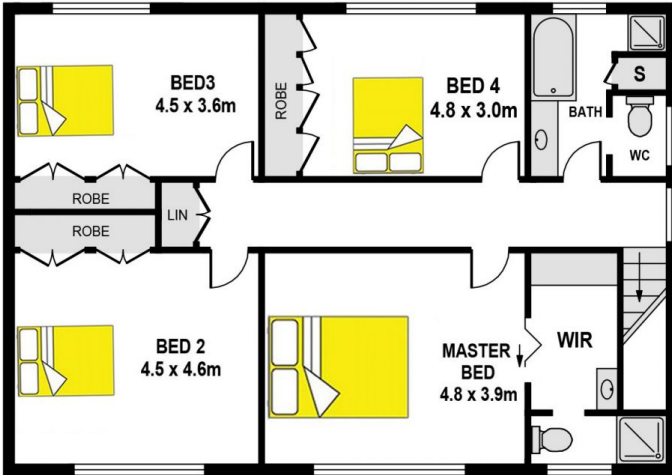
- Upstairs features the main bathroom and four over sized bedrooms. The master is complete with ensuite and walk-in robe, while the remaining three have built-in robes.
- Living areas consist of a large formal lounge and dining room, as well as an informal family/meals area and rumpus room.
- The open kitchen with stainless steel appliances and pantry includes plenty of bench space and storage for any aspiring chef.
- Entertain family and friends on the expansive undercover

Land Size : 1024 sqm

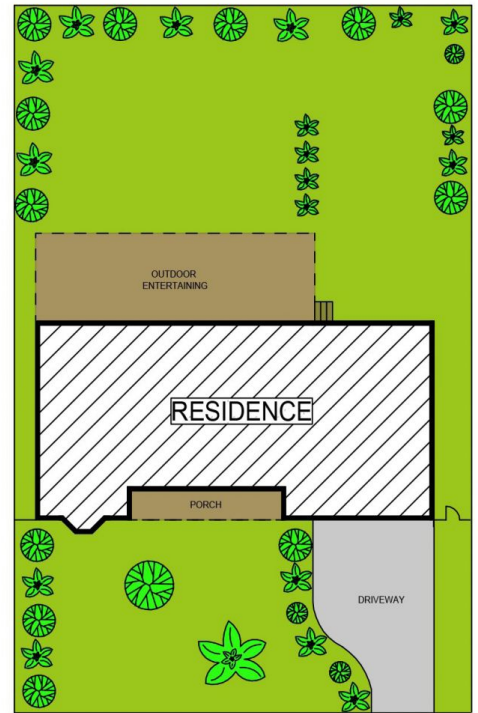
View : <https://www.gilmour.com.au/sale/nsw/hills/castle-hill/residential/house/5620803>



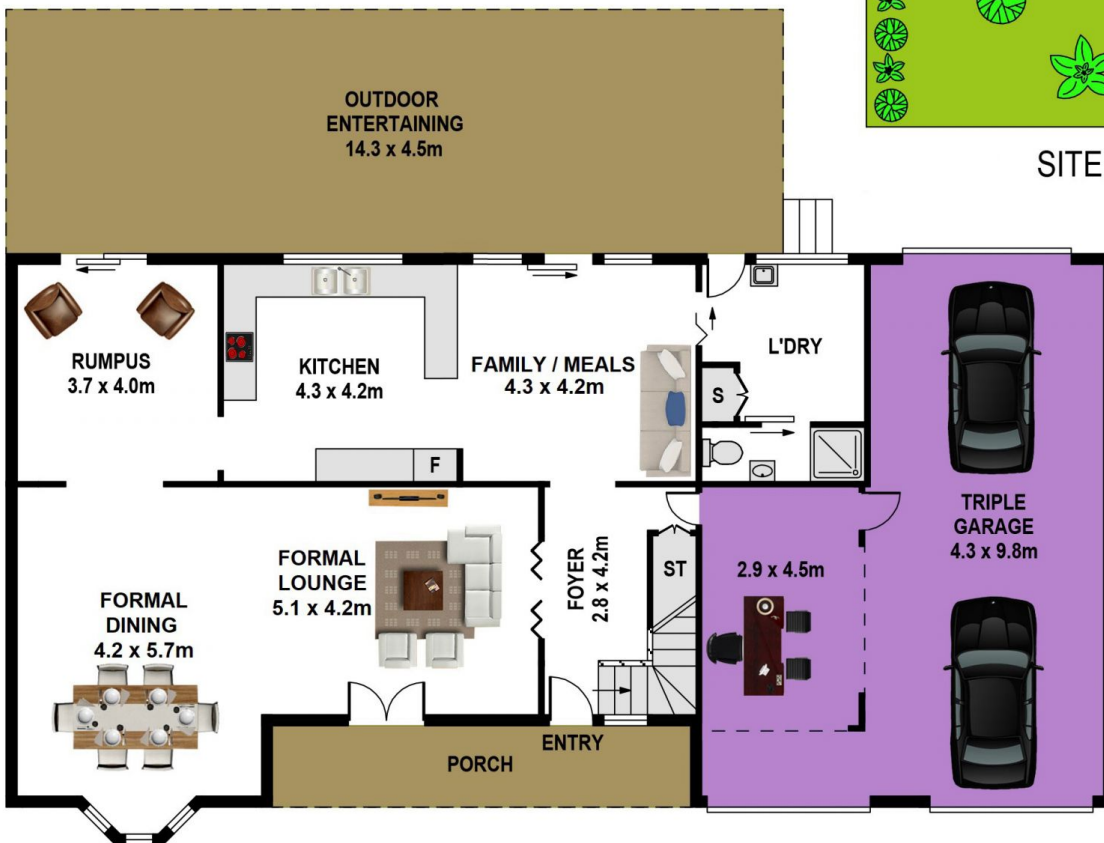
Gilmour Property Agents
02 9899 3311



FIRST FLOOR



SITE PLAN



GROUND FLOOR

13 NOTTINGHAM AVENUE, CASTLE HILL

DISCLAIMER:

All information contained herein is gathered from sources we consider to be reliable, however we cannot guarantee or give any warranty to the information provided.

