

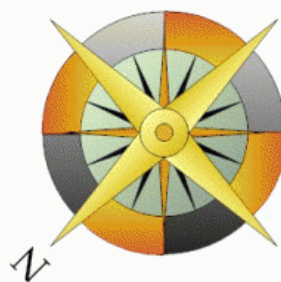
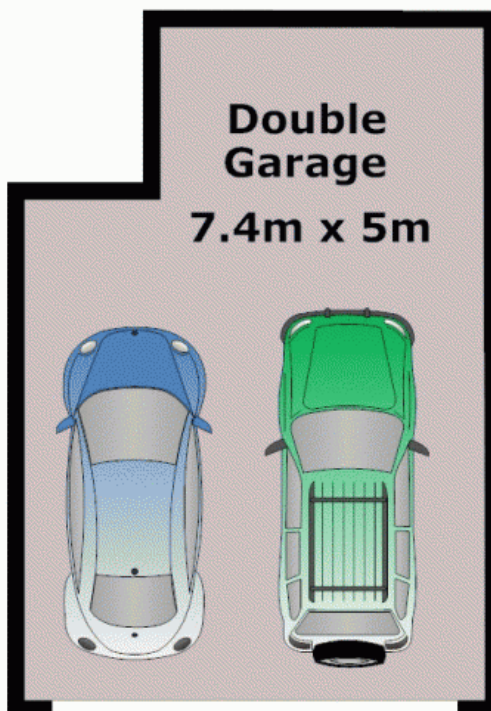
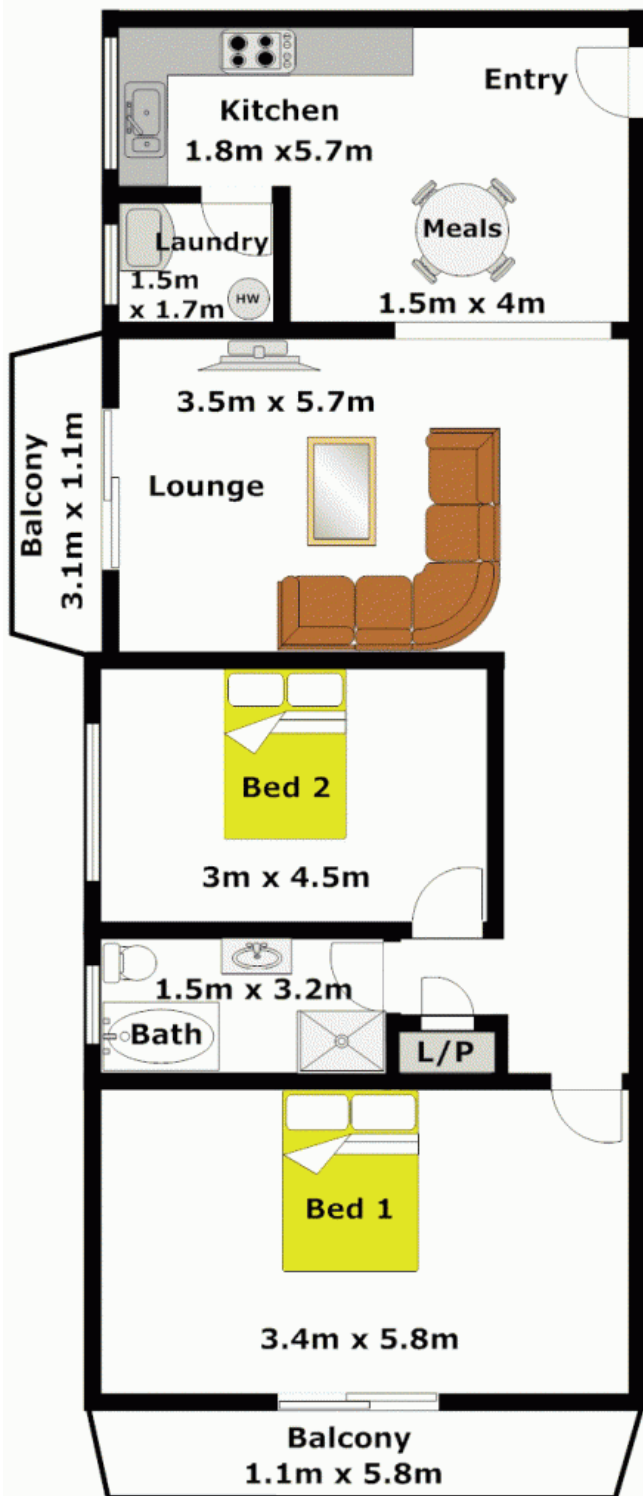
NORTH PARRAMATTA

Potential plus with this block of 6 x two bedroom units and balconies & 7 lock-up garages in walking distance to all services. Projected income of \$92,560 per annum this is a fantastic opportunity for a solid investment or great renovation project. With firm instructions to sell-auction Saturday 30th April, 2011 on site at 10am.
SOLD 30th April, 2011

View : <https://www.gilmour.com.au/sale/nsw/parramatta/north-parramatta/residential/land/5620857>



Gilmour Property Agents
02 9899 3311

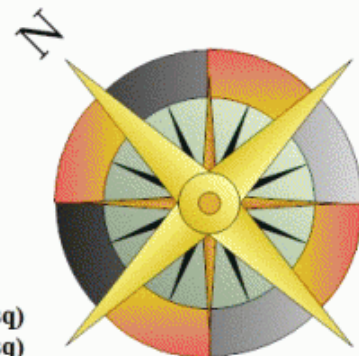
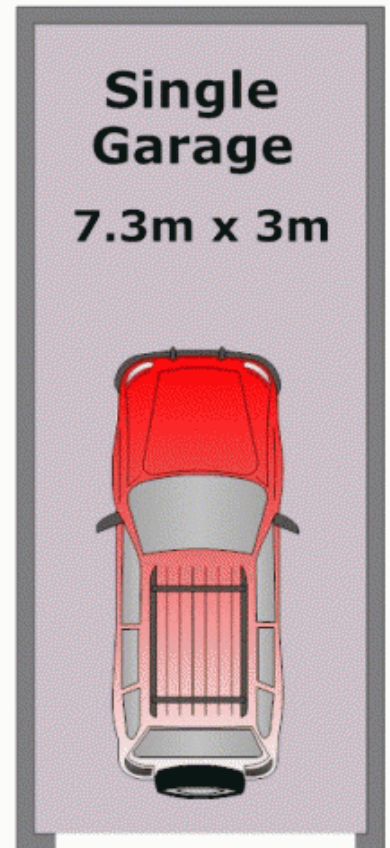
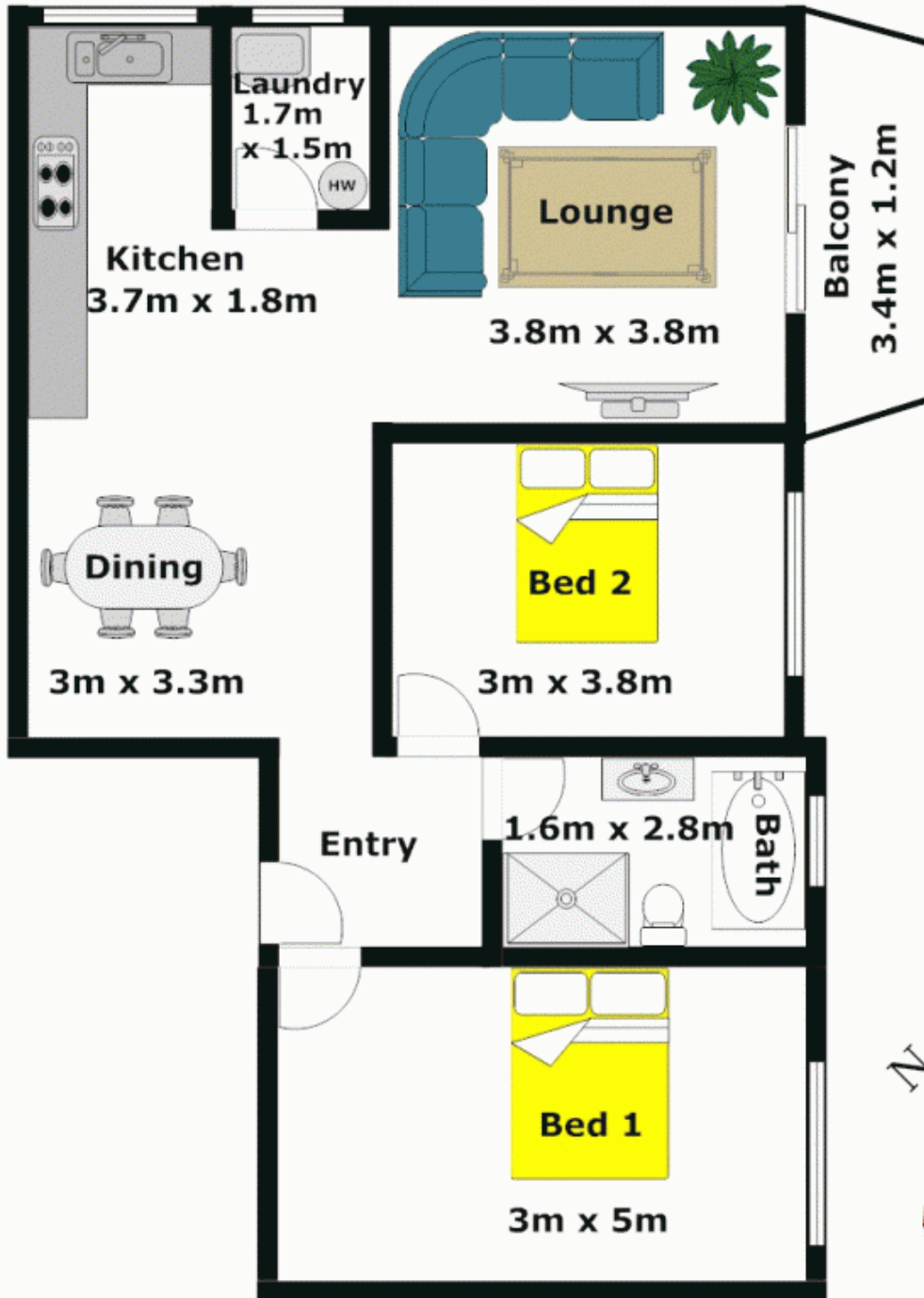


APPROXIMATE INTERNAL FLOOR AREA: 88m² (10sq)
APPROXIMATE GARAGE FLOOR AREA: 37m² (4sq)

APPROXIMATE TOTAL INTERNAL FLOOR AREA: 125m² (14sq)

DISCLAIMER:

Whilst every attempt has been made to ensure the accuracy of the floor plan contained here, no responsibility is taken for any error, omission, or misstatement. This floor plan is intended as a guide only, for representation purposes only, and should be used as such by any prospective purchaser. No guarantee or warranties can be given, and any person using this information should rely on their own enquires.



APPROXIMATE INTERNAL FLOOR AREA: 73m² (8sq)
 APPROXIMATE GARAGE FLOOR AREA: 22m² (2sq)

APPROXIMATE TOTAL INTERNAL FLOOR AREA: 95m² (10sq)

DISCLAIMER:

Whilst every attempt has been made to ensure the accuracy of the floor plan contained here, no responsibility is taken for any error, omission, or misstatement. This floor plan is intended as a guide only, for representation purposes only, and should be used as such by any prospective purchaser. No guarantee or warranties can be given, and any person using this information should rely on their own enquires.



Gilmour
PROPERTY AGENTS