



**18/2-4 Belinda Place Mays Hill NSW**

1 1 1

Located in a quiet place in close proximity to shops & transport this awesome entry level property will serve you well for many years to come.

**Price** : Price Guide \$450,000- to \$495,000-  
**View** : <https://www.gilmour.com.au/sale/nsw/parramatta/mays-hill/residential/unit/8013238>

It has a lovely aspect with the morning sun streaming in and the rest of the building shelters you from the hot westerly summer sun in the afternoon.

A good size bedroom with a full size built in wardrobe & access to the balcony + a generous size study, ideal for working from home or a place to store all those bits & pieces.

The modern, spacious, white gourmet eat in kitchen with a Caesar stone bench top will bring out the chef in you with oodles of preparation space and storage cupboards.

There is a great lounge and a dining area to relax in and the laundry is close by in a convenient American style cupboard .



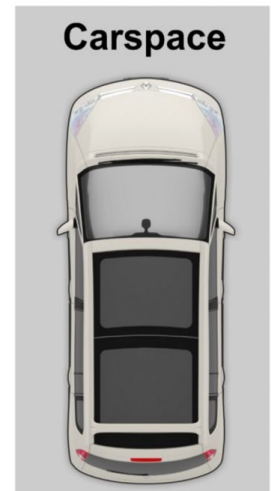
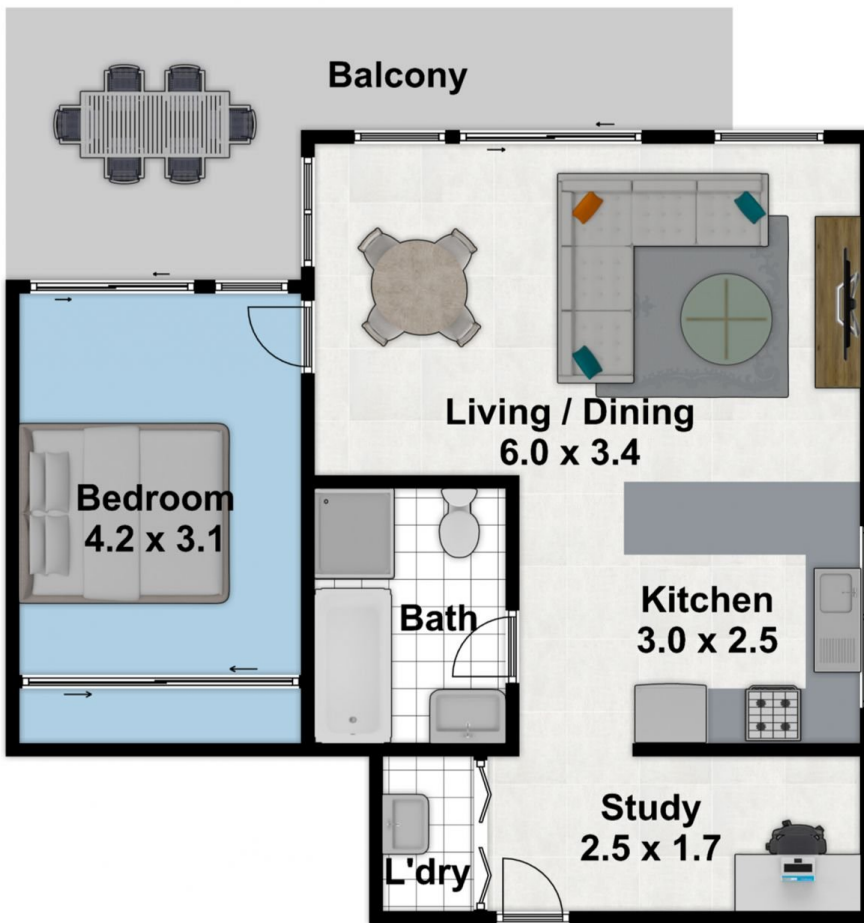
**Craig Alexis**  
02 9899 3311

# 18-2-4 Belinda Place Mays hill

Please note:

Floorplan measurements are a guide only.

All dimensions are approximate in their distance and volume.



-  1
-  1
-  1