






11 Lewis Court Castle Hill NSW

4  3  2 

This spacious family home is perfectly positioned in a quiet established cul-de-sac in Castle Hill. Located on a generous 936m² block. It offers both comfort and convenience for a growing family. Close to top schools, shopping centres and city transport, this property combines lifestyle and practicality.

Featuring four well-sized bedrooms, each with built-in wardrobes, the master suite includes an ensuite for added privacy. With three fully renovated bathrooms, this home makes the morning rush a breeze.

The generous lounge room provides ample space for a study nook or a work-from-home setup. Polished floorboards add warmth and character, leading to a

[For full version visit the website](https://www.gilmour.com.au/sale/nsw/hills/castle-hill/residential/house/8165319)

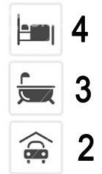
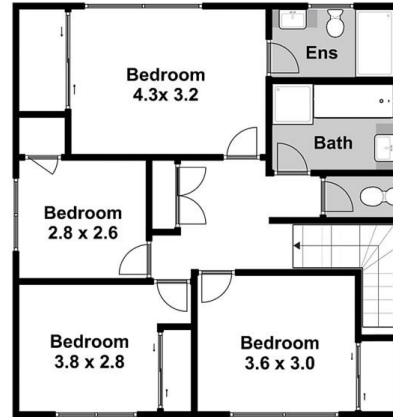
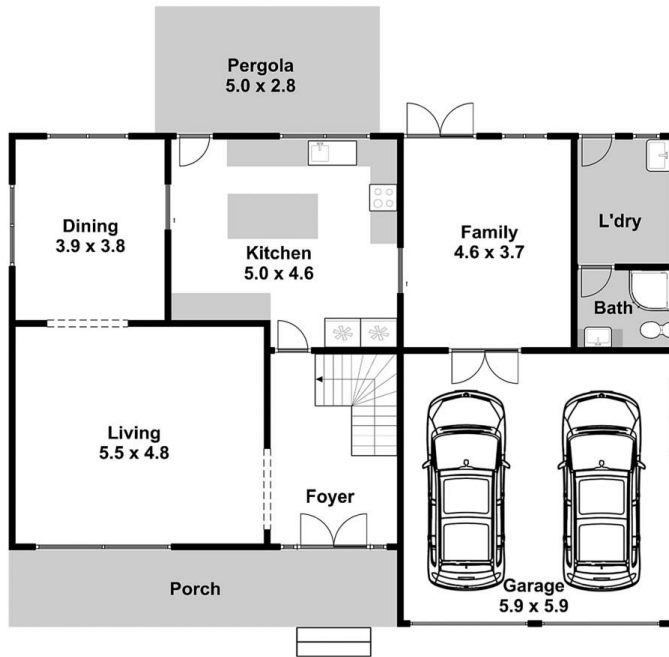
Type : House
Price : Just Listed
Land Size : 936 sqm
View : <https://www.gilmour.com.au/sale/nsw/hills/castle-hill/residential/house/8165319>



Craig Alexis
02 9899 3311

11 Lewis Court, Castle Hill

Please note:
Floorplan measurements are a guide only.
All dimensions are approximate in their distance and volume.
We cannot guarantee its accuracy and interested persons should rely on their own enquiries.



Front